

Model Test Paper 10
General Study Paper II

DO NOT OPEN THIS BOOKLET UNTIL YOU ARE TOLD TO DO SO

TEST BOOKLET
GENERAL STUDIES
Paper-II

B

Time Allowed : Two Hours

Maximum Marks : 200

INSTRUCTIONS

1. IMMEDIATELY AFTER THE COMMENCEMENT OF THE EXAMINATION YOU SHOULD CHECK THAT THE TEST BOOKLET *DOES NOT* HAVE ANY UNPRINTED OR TORN OR MISSING PAGES OR ITEMS, ETC, IF SO, GET IT REPLACED BY A COMPLETE TEST BOOKLET.
2. **Please note that it is the candidate's responsibility to encode and fill in the Roll Number and Test Booklet Series A, B, C or D carefully and without any omission or discrepancy at the appropriate place in the OMR Answer Sheet. Any omission/discrepancy will render the Answer Sheet liable for rejection.**
3. You have to enter your Roll Number on the Test Booklet in the Box provided alongside . *DO NOT* write *anything else* on the Test Booklet.
4. This Test Booklet contains **80** items (questions). Each item comprises four responses (answers). You will select the response which you want to mark on the Answer Sheet. In case you feel that there is more than one correct response, mark the response which you consider the best. In any case, choose *ONLY ONE* response for each item.
5. You have to mark all your responses *ONLY* on the separate Answer Sheet provided.
6. **All** items carry equal marks.
7. Before you proceed to mark in the Answer Sheet the response to various items in the Test Booklet, you have to fill in some particulars in the Answer Sheet as per instructions sent to you with your Admission Certificate.
8. After you have completed filling in all your responses on the Answer Sheet and the examination has concluded, you should hand over to the invigilator only the *Answer Sheet*. You are permitted to take away with you the Test Booklet.
9. Sheets for rough work are appended in the Test Booklet at the end.
10. **Penalty for wrong Answers :**
THERE WILL BE PENALTY FOR WRONG ANSWERS MARKED BY A CANDIDATE IN THE OBJECTIVE TYPE QUESTION PAPERS.
(i) There are four alternatives for the answer to every question. For each question for which a wrong answer has been given by the candidate, **one-third** of the marks assigned to that question will be deducted as penalty.
(ii) If a candidate gives more than one answer, it will be treated as a **wrong answer** even if one of the given answers happens to be correct and there will be same penalty as above to that question.
(iii) If a question is left blank, i.e., no answer is given by the candidate, there will be **no penalty** for that question.

DO NOT OPEN THIS BOOKLET UNTIL YOU ARE TOLD TO DO SO

Model Test Paper 10
General Study Paper II

<p>There have been three major influenza pandemics over the last century. The first and most severe was the Spanish flu of 1918 that infected half of the world's population and from which around 50 million people died. The next was the 1957 Asian flu which also infected nearly half of the world's population, but the number of fatalities was lower: about $\frac{3}{4}$ of a million in total. The third was the Hong Kong flu of 1968-69 which was the cause of between 1 and 3 million deaths. To put these figures into perspective, the more recent but more widely reported outbreaks have been comparatively small. It must also be remembered that between $\frac{1}{4}$ and $\frac{1}{2}$ million people worldwide die of seasonal influenza every year. Better communication worldwide in the last few decades means that new strains of flu become worldwide news very rapidly, but it also means that governments can quickly put into effect measures to help prevent the spread of the disease.</p> <p>1. The world's population in 1918 was less than 80 million</p> <p>(a) True</p> <p>(b) False</p> <p>(c) Cannot say</p> <p>(d)</p> <p>2. The Hong Kong flu pandemic of 1968-1969 had the second highest death toll from flu in the last century</p> <p>(a) True</p> <p>(b) False</p> <p>(c) Cannot say</p> <p>(d)</p>	<p>3. Major flu pandemics occur at least three times a century</p> <p>(a) True</p> <p>(b) False</p> <p>(c) Cannot say</p> <p>(d)</p> <p>4. Modern communication helps to prevent the spread of flu pandemics</p> <p>(a) True</p> <p>(b) False</p> <p>(c)</p> <p>(d) Cannot say</p> <p>With increasing costs of fuel and environmental concerns, hybrid cars are the way of the future. Hybrids provide both improved fuel economy and reduced emissions. Hybrid cars use a petrol engine and an electrical energy storage device, usually a battery of nickel-metal hydride cells. When a large amount of energy is required, the two work together; when a lesser amount of energy is required (at lower speeds around town), the stored electrical energy powers an electric motor. You won't notice much difference from a conventional car when you drive a hybrid, except that there will be very little noise at low speeds. What you will notice, however, is the improved fuel economy and dashboard displays that inform you about the energy flow and fuel consumption. Most hybrid cars have shown reduced greenhouse gas emissions of around 25% compared with a petrol car of a similar type, and use 15% to 30% less fuel. The purchase price of a hybrid is around 10% more than a similar-sized petrol-driven car, but the saving in the use of fuel should soon pay for the difference.</p>
--	--

Model Test Paper 10
General Study Paper II

<p>5. The only source of propulsion in a hybrid car is an electric motor</p> <p>(a) True</p> <p>(b) False</p> <p>(c) Cannot say</p> <p>(d)</p>	<p>photographs or videos. However, increasingly we are seeing the use of social networking sites where bullies make fun of victims or even get hold of their messaging accounts and chat to people pretending to be the victim. Cyberbullying can be more harmful than traditional forms of bullying since it happens at home (where victims should feel safe) and can involve many bullies at once. In the world of modern communication, cyberbullying is difficult for the victims to escape from.</p>
<p>6. Hybrid cars use less fuel and are more economical than conventional petrol-driven cars</p> <p>(a) True</p> <p>(b) False</p> <p>(c) Cannot say</p> <p>(d)</p>	<p>8. You are more likely to be a victim of cyberbullying if you are an adult</p> <p>(a) True</p> <p>(b) False</p> <p>(c) Cannot say</p> <p>(d)</p>
<p>7. The nickel-metal hydride cells add around 10% onto the cost of a hybrid car compared with a similar conventionally-powered car</p> <p>(a) True</p> <p>(b) False</p> <p>(c) Cannot say</p> <p>(d)</p>	<p>9. Social networking sites can be used by cyberbullies by stealing the identity of their victim and pretending to be them</p> <p>(a) True</p> <p>(b) False</p> <p>(c) Cannot say</p> <p>(d)</p>
<p>Cyberbullying is a relatively new phenomenon. It occurs mainly among young people, especially teenagers, and has replaced traditional forms of physical and verbal bullying, presumably because it can provide some anonymity and is seen to be 'at a distance'. The main types of cyberbullying are by direct contact through e-mails, instant messages or the use of mobile phones for texting or sending</p>	<p>10. The solution to reduce cyberbullying is for parents to restrict their children's use of the internet and their mobile phones</p> <p>(a) True</p> <p>(b) False</p>

Model Test Paper 10
General Study Paper II

<p>(c) Cannot say</p> <p>(d)</p> <p>Seventy years ago a girl discovered a strange skeleton in a tunnel in Mexico. All that remains of the skeleton today is the skull. In 1999 the skull was given to Lloyd Pye, an American author and researcher into an alternative theory of the origin of human life. Since that time Pye has been trying to prove that the skull, named 'Starchild', is that of an alien. The skull is much less heavy than a human skull, has an unusual shape and unusually placed eye sockets. It also has strange fibres running through the bone. Various tests have been done on the skull, showing that its bone has a different chemical composition from human bone. A DNA test has shown that the mother of 'Starchild' was human, but the father's genetic heritage could not be recovered. Pye has concluded that 'Starchild' is a hybrid of a human mother and an alien father. Some scientists are more sceptical and believe that 'Starchild' was a malformed human.</p> <p>11. The skull of 'Starchild' is much heavier than a normal human skull</p> <p>(a) True</p> <p>(b) False</p> <p>(c) Cannot say</p> <p>(d)</p> <p>12. DNA tests have not disproved the theory that 'Starchild' was a hybrid of a human mother and an alien father</p> <p>(a) True</p> <p>(b) False</p> <p>(c) Cannot say</p> <p>(d)</p>	<p>13. Some scientists believe that Pye is a fraud and that he has used the unusual skull to try to further his theory of an alternative origin of human life</p> <p>(a) True</p> <p>(b) False</p> <p>(c) Cannot say</p> <p>(d)</p> <p>Bluetooth is a modern wireless technology named after an ancient Viking King, King Blatand (which is Danish for King Bluetooth) who united the warring tribes of Denmark and Norway in the 10th Century. Bluetooth was given this name because it unites together many devices such as your computer, your personal digital assistant, your mobile phone and your digital camera. The advantage of Bluetooth is that it does away with the need for cables and communicates instead by radio. All that's needed is for each device to have a Bluetooth chip. To communicate between the Bluetooth-enabled devices, all you need to do is put them within ten metres of each other. The real advantage of Bluetooth is that it allows you to easily synchronise data stored on your various devices. However, there are some issues with security using Bluetooth, despite each device having an individual ID number and PIN. To reduce this risk and to prevent eavesdropping, the radio frequency is continually changed.</p> <p>14. The Viking King, King Blatand, invented the Bluetooth technology</p> <p>(a) True</p> <p>(b) False</p> <p>(c) Cannot say</p> <p>(d)</p>
--	--

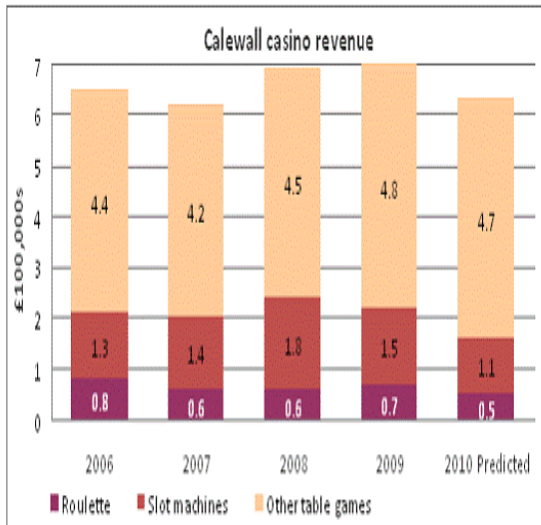
Model Test Paper 10
General Study Paper II

<p>15. Bluetooth provides a secure way to communicate between your various devices, such as your computer, your personal digital assistant, your mobile phone and your digital camera</p> <p>(a) True</p> <p>(b) False</p> <p>(c) Cannot say</p> <p>(d)</p> <p>16. Bluetooth avoids the 2.45 GHz radio frequency band for security reasons</p> <p>(a) True</p> <p>(b) False</p> <p>(c) Cannot say</p> <p>(d)</p> <p>17. Bluetooth-enabled devices can communicate with each other if they are five metres apart</p> <p>(a) True</p> <p>(b) False</p> <p>(c) Cannot say</p> <p>(d)</p> <p>Employees in the United Kingdom are now enjoying more holidays than ever before. From 1st April 2009 the minimum statutory entitlement to paid annual leave for workers has increased from 4.8 weeks to 6 weeks (based on a five day working week). This is the minimum, but some employers may offer more – you should consult your contract</p>	<p>of employment. However, the employer can choose when you take your holidays. The 6 week entitlement is for an employee in full employment for a year with a five day working week, and includes public holidays. The entitlement for part-time workers is calculated as 6 weeks times their normal working week. Similarly, the entitlement for a full-time worker who does not complete a year with an employer is worked out on a pro-rata basis.</p> <p>18. From 1st April 2009 workers in the UK who work a five day week are entitled to 30 days' paid holiday per year of work</p> <p>(a) True</p> <p>(b) False</p> <p>(c) Cannot say</p> <p>(d)</p> <p>19. Employees granted long-term sick leave lose their full entitlement of paid annual leave</p> <p>(a) True</p> <p>(b) False</p> <p>(c) Cannot say</p> <p>(d)</p> <p>20. You have a right to take at least some of your annual holidays during the summer</p> <p>(a) True</p> <p>(b) False</p> <p>(c) Cannot say</p> <p>(d)</p>
--	--

**Model Test Paper 10
General Study Paper II**

21. The annual leave entitlement of 6 weeks includes public holidays, but some employers may give additional leave entitlement

- (a) True
- (b) False
- (c) Cannot say
- (d)



Calewall casino	Year	Annual attendances (100,000s)
	2006	14.6
	2007	15.2
	2008	16.3
	2009	18.8
	2010 Predicted	18.5

22. How much did the combined revenue from Slot machines and Roulette differ from that of Other table games between 2006-2009 inclusive (in £millions)?

- (a) 0.9

- (b) 9.
- (c) 9.2
- (d) 0.92

23. What was the average amount gambled on Slot machines in 2007 by each individual who attended Calewall casino?

- (a) £90.0
- (b) £9.00
- (c) £0.90
- (d) £0.09

24. There is a £15 entrance fee for each person gambling at Calewall casino. In which year, or years, was the entrance fee revenue less than £23 million?

- (a) 2006, 2007
- (b) 2007, 2008
- (c) 2007
- (d) 2006

25. What will be the average annual change in attendance at Calewall casino across the years 2006-2010 if the 2010 prediction proves to be accurate?

- (a) 47,500 decrease
- (b) 53,500 decrease
- (c) 52,500 increase
- (d) 47,500 increase

**Model Test Paper 10
General Study Paper II**

26. Calewall casino is subject to a takeover bid of 7 times its 2010 projected casino revenues. The Board responds that it can deliver 10% added value through cost-cuttings to this purchase price. What valuation is the Board putting on Calewall casino (in £millions)?

- (a) £48.51 million
- (b) £44.1 million
- (c) £4.85 million
- (d) £4.41 million

27. If the 2010 prediction proves to be accurate, what is the average annual percentage change in Teala Media's R&D spend across the 5 years shown?

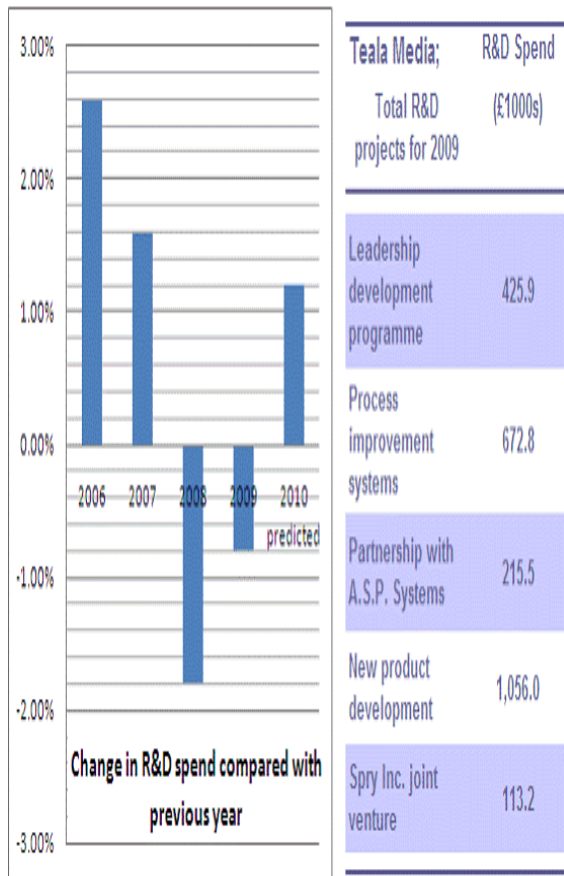
- (a) 0.53
- (b) 0.54
- (c) 0.55
- (d) 0.56

28. What is the R&D spend projected to be for 2010?

- (a) £2.5 million
- (b) £2.75 million
- (c) £3.0 million
- (d) £3.25 million

29. What was the R&D spend for 2008 (to the nearest £1,000)?

- (a) £2,235,000
- (b) £2,613,000
- (c) £2,503,000
- (d) £2,483,000



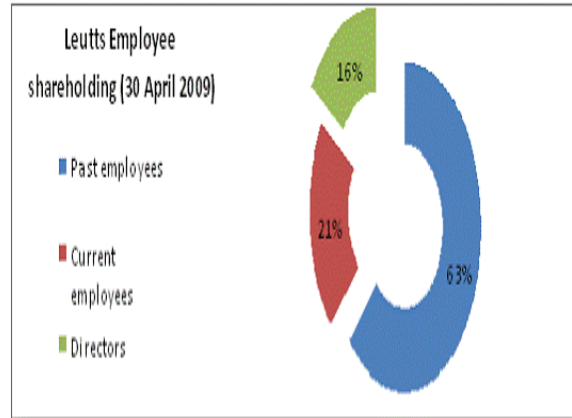
Model Test Paper 10
General Study Paper II

30. R&D costs were 12% of R&D spend in 2009. If R&D costs are projected to rise by 1.1% between 2009 and 2010, what is the 2010 predicted R&D sum available after costs are taken in to account?

- (a) £1.02million
- (b) £1.22million
- (c) £2.11million
- (d) £2.21million

31. If delays at the end of 2009 resulted in a 2.5% increase in the cost of each of the two most expensive projects, what is the total R&D spend for 2009 (to the nearest £1,000)?

- (a) £2,482,000
- (b) £2,527,000
- (c) £2,528,000
- (d) £2,556,000



List of All Directors	Number of Shares		
	At 1st April 2009	At 30 April 2009	At 31 st May 2009
Geoffrey Yates	1,100	1,050	910
Tobey Gilham	1,050	950	820
Susan Preddy	950	820	250
Samantha Hoxton	990	1,100	550
Trudy Stupples	1,200	960	2,400

32. What is the number of shares not held by Directors of Leutts (as of 30 April 2009)?

- (a) 25,620
- (b) 6,850
- (c) 43,500
- (d) Cannot tell from data

Model Test Paper 10
General Study Paper II

33. Which Director has bought or sold the largest number of shares across the 2-month period shown?

- (a) Geoffrey Yates
- (b) Trudy Stupples
- (c) Samantha Hoxton
- (d) Susan Preddy

34. If Tobey Gilham sells half of his shareholding at 31 May 2009 at £45 per share, how much is this trade worth?

- (a) £3,690
- (b) £18,250
- (c) £18,45
- (d) £9,230

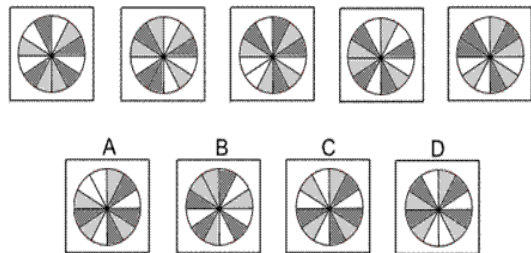
35. Which of the following statements is true?

- (a) Current employees and Directors owned 40% of Leutts shares on 30 April 2009
- (b) The largest Director share dealing was 1,440 shares
- (c) Directors held 4,870 shares in total on 30 April 2009
- (d) Tobey Gilham held the most shares of any Director on 1st April 2009

36. If Leutts shares are worth £52 on 30 April 2009, then what is the share valuation of the entire company?

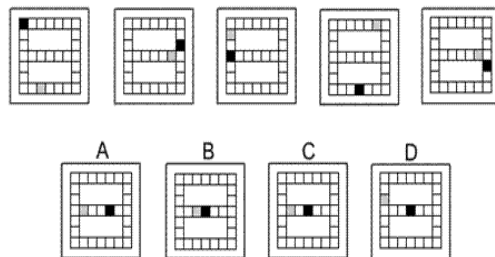
- (a) £1,686,000
- (b) £1,588,000
- (c) £1,566,000
- (d) £1,586,000

37.



- (a) A
- (b) B
- (c) C
- (d) D

38.



Model Test Paper 10
General Study Paper II

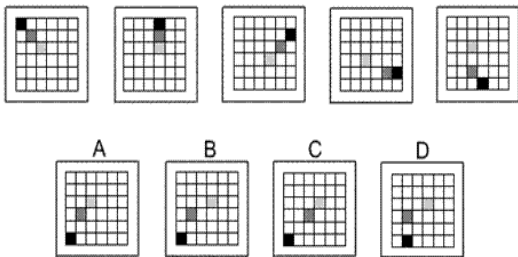
(a) A

(b) B

(c) C

(d) D

39.



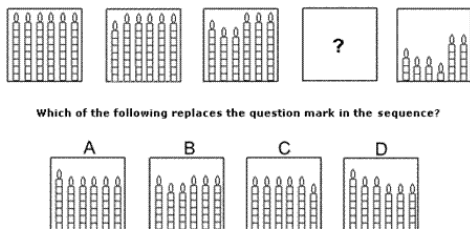
(a) A

(b) B

(c) C

(d) D

40.



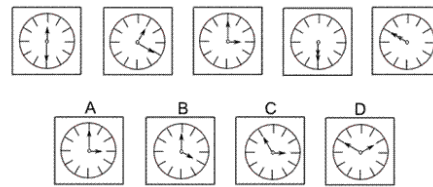
(a) A

(b) B

(c) C

(d) D

41.



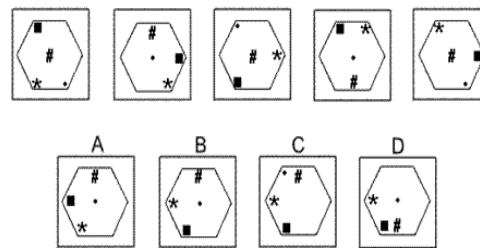
(a) A

(b) B

(c) C

(d) D

42.



(a) A

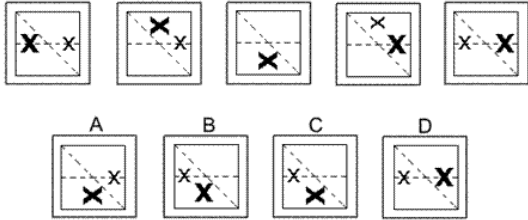
(b) B

(c) C

(d) D

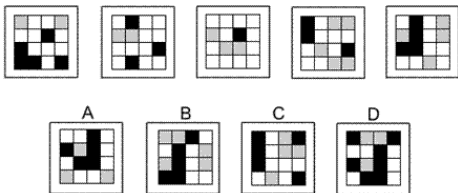
Model Test Paper 10
General Study Paper II

43.



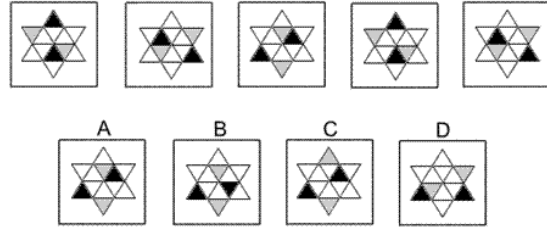
- (a) A
- (b) B
- (c) C
- (d) D

44.



- (a) A
- (b) B
- (c) C
- (d) D

45.



- (a) A
- (b) B
- (c) C
- (d) D

46. 14 14 26 26 38 38 50

- (a) 60 72
- (b) 50 62
- (c) 50 72
- (d) 62 62

47. 8 12 9 13 10 14 11

- (a) 14 11
- (b) 15 12
- (c) 8 15
- (d) 15 19

Model Test Paper 10
General Study Paper II

<p>48. Look at this series: $1/9, 1/3, 1, _, 9, \dots$. What number should fill the blank?</p> <p>(a) $2/3$</p> <p>(b) 3</p> <p>(c) 6</p> <p>(d) 27</p> <p>49. Look at this series: U32, V29, $_,$ X23, Y20, \dots. What number should fill the blank?</p> <p>(a) W26</p> <p>(b) W17</p> <p>(c) Z17</p> <p>(d) Z26</p> <p>50. Which word does NOT belong with the others?</p> <p>(a) evaluate</p> <p>(b) assess</p> <p>(c) appraise</p> <p>(d) instruct</p> <p>51. SKEIN : YARN</p> <p>(a) squeeze : lemon</p> <p>(b) fire : coal</p> <p>(c) ream : paper</p> <p>(d) tree : lumber</p>	<p>52. TAILOR : SUIT</p> <p>(a) scheme : agent</p> <p>(b) edit : manuscript</p> <p>(c) revise : writer</p> <p>(d) mention : opinion</p> <p>53. Here are some words translated from an artificial language. krekinblaf means workforce dritakrekin means groundwork krekinalti means workplace Which word could mean "someplace"?</p> <p>(a) moropalti</p> <p>(b) krekindrita</p> <p>(c) altiblaf</p> <p>(d) dritaalti</p> <p>54. Here are some words translated from an artificial language. plekapaki means fruitcake pakishillen means cakewalk treftalan means buttercup Which word could mean "cupcake"?</p> <p>(a) shillenanalan</p> <p>(b) treftpleka</p> <p>(c) pakitreft</p> <p>(d) alanpaki</p>
--	--

Model Test Paper 10
General Study Paper II

55. Here are some words translated from an artificial language.

peslligen means basketball court

ligenstrisi means courtroom

oltaganti means placement test

Which word could mean "guest room"?

(a) peslstrisi

(b) vosefstrisi

(c) gantipesl

(d) oltastrisi

56. For a wall of a given material and of a fixed surface area, the rate of heat loss by conduction through the wall is inversely proportional to the thickness (T) of the wall, and directly proportional to the temperature difference (d) across the wall. The rate of heat loss could be given by which of the following expressions?

(a) $2d/T$

(b) $2 T/d$

(c) $2d + \frac{1}{2} T$

(d) T/d

57.

Number of children	0	1	2	3
Number of families	13	24	36	27

Data were collected on the number of children per family in a certain village and tabulated as shown above.

The average (mean) number of children per family in the village is approximately

(a) 2.4

(b) 2.0

(c) 1.8

(d) 1.5

58. Refer to the table provided in the previous question.

The difference between the median and the mode of the number of children per family is

(a) 2.5

(b) 2.0

(c) 1.5

(d) 0

59. If x is an integer, which of the following could be x^3 ?

I 1.25×10^{17}

II 12.5×10^{-12}

III 0.125×10^{-12}

(a) I only

(b) II only

(c) I and II only

(d) I and III only

60. At what point does the graph of $5x + 4y = 12$ intersect the y-axis?

(a) (0, 3)

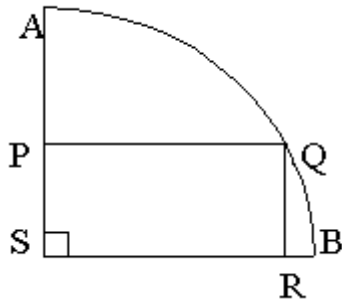
(b) (0, -3)

(c) (3, 0)

(d) (5, 0)

Model Test Paper 10
General Study Paper II

61.



ASB is a quarter circle. PQRS is a rectangle with sides $PQ = 8$ and $PS = 6$. What is the length of the arc AQB ?

- (a) 5π
- (b) 10π
- (c) 25
- (d) 14

62. If $x \times y = (x + y)^2 - (x - y)^2$
Then $\sqrt{5} \times \sqrt{5} =$

- (a) 0
- (b) 5
- (c) 10
- (d) 20

63.

<u>A</u>	<u>B</u>
2	5
3	10
4	17
5	26

Which of the following describes the relationship between A and B as shown in the pairs of numbers in the table above?

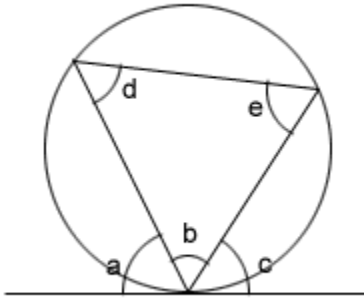
- (a) $B = A + 4$
- (b) $B = 2A + 1$
- (c) $B = 3A - 1$
- (d) $B = A^2 + 1$

64. The total weight of a tin and the cookies it contains is 2 pounds. After $\frac{3}{4}$ of the cookies are eaten, the tin and the remaining cookies weigh 0.8 pounds. What is the weight of the empty tin in pounds?

- (a) 0.2
- (b) 0.3
- (c) 0.4
- (d) 0.5

Model Test Paper 10
General Study Paper II

65.



Which of the following pairs of angles must be equal?

- (a) a and e only
- (b) a and e, and c and d only
- (c) c and d only
- (d) d and e only

66. In a lottery of 50 tickets numbered from '1' to '50' two tickets are drawn simultaneously. Find the probability that: None of the tickets drawn have a prime number on it

- (a) $3/7$
- (b) $16/35$
- (c) $17/35$
- (d) $18/35$

67. A bag contains 30 tickets, numbered from '1' to '30'. Five tickets are drawn at random and arranged in ascending order. Find the probability that the third number is 20.

- (a) $280/5277$
- (b) $285/5278$
- (c) $289/5278$
- (d) $289/5299$

68. If '12' persons are seated at a round table, what is the probability that two particular persons sit together?

- (a) $1/11$
- (b) $2/11$
- (c) $3/11$
- (d) $4/11$

69. 6 boys and 6 girls sit in a row randomly, find the probability that all the '6' girls sit together.

- (a) $1/130$
- (b) $1/131$
- (c) $1/132$
- (d) $1/133$

70. From a pack of 52 playing cards, three cards are drawn at random. Find the probability of drawing a king, a queen and a jack

- (a) $1/5525$
- (b) $3/5525$
- (c) $7/5525$
- (d) $16/5525$

Model Test Paper 10
General Study Paper II

<p>71. Danielle has been visiting friends in Ridgewood for the past two weeks. She is leaving tomorrow morning and her flight is very early. Most of her friends live fairly close to the airport. Madison lives ten miles away. Frances lives five miles away, Samantha, seven miles. Alexis is farther away than Frances, but closer than Samantha. Approximately how far away from the airport is Alexis?</p> <p>(a) nine miles</p> <p>(b) seven miles</p> <p>(c) eight miles</p> <p>(d) six miles</p> <p>72. Ms. Forest likes to let her students choose who their partners will be; however, no pair of students may work together more than seven class periods in a row. Adam and Baxter have studied together seven class periods in a row. Carter and Dennis have worked together three class periods in a row. Carter does not want to work with Adam. Who should be assigned to work with Baxter?</p> <p>(a) Carter</p> <p>(b) Adam</p> <p>(c) Dennis</p> <p>(d) Forest</p> <p>73. At the baseball game, Henry was sitting in seat 253. Marla was sitting to the right of Henry in seat 254. In the seat to the left of Henry was George. Inez was sitting to the left of George. Which seat is Inez sitting in?</p> <p>(a) 251</p> <p>(b) 254</p>	<p>(c) 255</p> <p>(d) 256</p> <p>The following questions involve analytical reasoning—better known as “logic games”. These games give the most trouble to students who haven’t defined a specific method for solving these problems. The best way to attack logic games is to have a plan. When solving the problems in this set, try the following strategy:</p> <ol style="list-style-type: none">1. Know the rules of the logic game and what each rule means.2. Draw up an easy-to-reference diagram that includes all of the game’s information.3. Look for common elements in the rules; you can combine these to make deductions.4. Read the questions carefully; be sure you know what is being asked before you try to answer the question. <p>Answer questions 74 through 76 on the basis of the information below. The government of an island nation is in the process of deciding how to spend its limited income. It has \$7 million left in its budget and eight programs to choose among. There is no provision in the constitution to have a surplus, and each program has requested the minimum amount they need; in other words, no program may be partially funded. The programs and their funding requests are:</p> <p>Hurricane preparedness: \$2.5 million Harbor improvements: \$1 million School music program: \$0.5 million Senate office building remodeling: \$1.5 million Agricultural subsidy program: \$2 million National radio: \$0.5 million Small business loan program: \$3 million International airport: \$4 million</p>
---	--

Model Test Paper 10
General Study Paper II

<p>74. If the legislature decides to fund the agricultural subsidy program, national radio, and the small business loan program, the only other single program that can be funded is</p> <p>(a) hurricane preparedness</p> <p>(b) harbor improvements</p> <p>(c) school music program</p> <p>(d) senate office building remodeling</p> <p>75. If the legislature decides to fund the agricultural subsidy program, national radio, and the small business loan program, what two other programs could they fund?</p> <p>(a) harbor improvements and international airport</p> <p>(b) harbor improvements and school music program</p> <p>(c) hurricane preparedness and school music program</p> <p>(d) hurricane preparedness and international airport</p> <p>76. Senators from urban areas are very concerned about assuring that there will be funding for a new international airport. Senators from rural areas refuse to fund anything until money for agricultural subsidies is appropriated. If the legislature funds these two programs, on which of the following could they spend the rest of the money?</p> <p>(a) the school music program and national radio</p> <p>(b) hurricane preparedness</p> <p>(c) harbor improvements and the school music program</p>	<p>(d) small business loan program</p> <p>Answer questions 77 through 78 on the basis of the information below.</p> <p>A weekly television show routinely stars six actors, J, K, L, M, N, and O. Since the show has been on the air for a long time, some of the actors are good friends and some do not get along at all. In an effort to keep peace, the director sees to it that friends work together and enemies do not. Also, as the actors have become more popular, some of them need time off to do other projects. To keep the schedule working, the director has a few things she must be aware of:</p> <p>J will only work on episodes on which M is working.</p> <p>N will not work with K under any circumstances.</p> <p>M can only work every other week, in order to be free to film a movie</p> <p>At least three of the actors must appear in every weekly episode.</p> <p>77. In a show about L getting a job at the same company J already works for and K used to work for, all three actors will appear. Which of the following is true about the other actors who may appear?</p> <p>(a) M, N, and O must all appear</p> <p>(b) M may appear and N must appear</p> <p>(c) M must appear and O may appear</p> <p>(d) O may appear and N may appear</p>
---	--

Model Test Paper 10
General Study Paper II

78. Next week, the show involves N's new car and O's new refrigerator. Which of the following is true about the other actors who may appear?

- (a) M, J, L, and K all may appear
- (b) J, L, and K must appear
- (c) Only K may appear
- (d) Only L may appear

Some logical reasoning questions ask you to determine the method the speaker is using when he or she presents the argument. Method-of-argument questions ask you to demonstrate an understanding of how a speaker's argument is put together. To determine the method of argument, again focus on the conclusion and on the evidence presented. What method does the speaker use to link the two?

Answer question 79 on the basis of the information below.

I know that our rules prohibit members from bringing more than one guest at a time to the club, but I think there should be an exception to the rule on Tuesdays, Wednesdays, and Thursdays. Members should be allowed to bring multiple guests on those days, since the majority of members use the club facilities on the other four days of the week.

79. The rules restricting the number of guests a member can bring to the club probably are intended to

- (a) assure that members are not crowded by the presence of guests
- (b) provide extra income for the club on slow days

(c) allow members to bring guests to the club for special events

(d) restrict guests to public areas of the club
Answer questions 80 on the basis of the information below.

A recent study on professional football players showed that this new ointment helps relieve joint pain. My mother has arthritis, and I told her she should try it, but she says it probably won't help her.

80. What argument should the mother use to point out why the ointment probably will not help her arthritis?

- (a) The ointment was just experimental
- (b) The ointment is expensive
- (c) Football players' joint pain is not the result of arthritis
- (d) She has already tried another ointment and it didn't work

Model Test Paper 10
General Study Paper II

--	--

Answer Sheet

	A	B	C	D		A	B	C	D		A	B	C	D		A	B	C	D			
1	<input type="radio"/>	<input type="radio"/>	<input type="radio"/>	<input type="radio"/>		21	<input type="radio"/>	<input type="radio"/>	<input type="radio"/>	<input type="radio"/>		41	<input type="radio"/>	<input type="radio"/>	<input type="radio"/>	<input type="radio"/>		61	<input type="radio"/>	<input type="radio"/>	<input type="radio"/>	<input type="radio"/>
2	<input type="radio"/>	<input type="radio"/>	<input type="radio"/>	<input type="radio"/>		22	<input type="radio"/>	<input type="radio"/>	<input type="radio"/>	<input type="radio"/>		42	<input type="radio"/>	<input type="radio"/>	<input type="radio"/>	<input type="radio"/>		62	<input type="radio"/>	<input type="radio"/>	<input type="radio"/>	<input type="radio"/>
3	<input type="radio"/>	<input type="radio"/>	<input type="radio"/>	<input type="radio"/>		23	<input type="radio"/>	<input type="radio"/>	<input type="radio"/>	<input type="radio"/>		43	<input type="radio"/>	<input type="radio"/>	<input type="radio"/>	<input type="radio"/>		63	<input type="radio"/>	<input type="radio"/>	<input type="radio"/>	<input type="radio"/>
4	<input type="radio"/>	<input type="radio"/>	<input type="radio"/>	<input type="radio"/>		24	<input type="radio"/>	<input type="radio"/>	<input type="radio"/>	<input type="radio"/>		44	<input type="radio"/>	<input type="radio"/>	<input type="radio"/>	<input type="radio"/>		64	<input type="radio"/>	<input type="radio"/>	<input type="radio"/>	<input type="radio"/>
5	<input type="radio"/>	<input type="radio"/>	<input type="radio"/>	<input type="radio"/>		25	<input type="radio"/>	<input type="radio"/>	<input type="radio"/>	<input type="radio"/>		45	<input type="radio"/>	<input type="radio"/>	<input type="radio"/>	<input type="radio"/>		65	<input type="radio"/>	<input type="radio"/>	<input type="radio"/>	<input type="radio"/>
6	<input type="radio"/>	<input type="radio"/>	<input type="radio"/>	<input type="radio"/>		26	<input type="radio"/>	<input type="radio"/>	<input type="radio"/>	<input type="radio"/>		46	<input type="radio"/>	<input type="radio"/>	<input type="radio"/>	<input type="radio"/>		66	<input type="radio"/>	<input type="radio"/>	<input type="radio"/>	<input type="radio"/>
7	<input type="radio"/>	<input type="radio"/>	<input type="radio"/>	<input type="radio"/>		27	<input type="radio"/>	<input type="radio"/>	<input type="radio"/>	<input type="radio"/>		47	<input type="radio"/>	<input type="radio"/>	<input type="radio"/>	<input type="radio"/>		67	<input type="radio"/>	<input type="radio"/>	<input type="radio"/>	<input type="radio"/>
8	<input type="radio"/>	<input type="radio"/>	<input type="radio"/>	<input type="radio"/>		28	<input type="radio"/>	<input type="radio"/>	<input type="radio"/>	<input type="radio"/>		48	<input type="radio"/>	<input type="radio"/>	<input type="radio"/>	<input type="radio"/>		68	<input type="radio"/>	<input type="radio"/>	<input type="radio"/>	<input type="radio"/>
9	<input type="radio"/>	<input type="radio"/>	<input type="radio"/>	<input type="radio"/>		29	<input type="radio"/>	<input type="radio"/>	<input type="radio"/>	<input type="radio"/>		49	<input type="radio"/>	<input type="radio"/>	<input type="radio"/>	<input type="radio"/>		69	<input type="radio"/>	<input type="radio"/>	<input type="radio"/>	<input type="radio"/>
10	<input type="radio"/>	<input type="radio"/>	<input type="radio"/>	<input type="radio"/>		30	<input type="radio"/>	<input type="radio"/>	<input type="radio"/>	<input type="radio"/>		50	<input type="radio"/>	<input type="radio"/>	<input type="radio"/>	<input type="radio"/>		70	<input type="radio"/>	<input type="radio"/>	<input type="radio"/>	<input type="radio"/>
11	<input type="radio"/>	<input type="radio"/>	<input type="radio"/>	<input type="radio"/>		31	<input type="radio"/>	<input type="radio"/>	<input type="radio"/>	<input type="radio"/>		51	<input type="radio"/>	<input type="radio"/>	<input type="radio"/>	<input type="radio"/>		71	<input type="radio"/>	<input type="radio"/>	<input type="radio"/>	<input type="radio"/>
12	<input type="radio"/>	<input type="radio"/>	<input type="radio"/>	<input type="radio"/>		32	<input type="radio"/>	<input type="radio"/>	<input type="radio"/>	<input type="radio"/>		52	<input type="radio"/>	<input type="radio"/>	<input type="radio"/>	<input type="radio"/>		72	<input type="radio"/>	<input type="radio"/>	<input type="radio"/>	<input type="radio"/>
13	<input type="radio"/>	<input type="radio"/>	<input type="radio"/>	<input type="radio"/>		33	<input type="radio"/>	<input type="radio"/>	<input type="radio"/>	<input type="radio"/>		53	<input type="radio"/>	<input type="radio"/>	<input type="radio"/>	<input type="radio"/>		73	<input type="radio"/>	<input type="radio"/>	<input type="radio"/>	<input type="radio"/>
14	<input type="radio"/>	<input type="radio"/>	<input type="radio"/>	<input type="radio"/>		34	<input type="radio"/>	<input type="radio"/>	<input type="radio"/>	<input type="radio"/>		54	<input type="radio"/>	<input type="radio"/>	<input type="radio"/>	<input type="radio"/>		74	<input type="radio"/>	<input type="radio"/>	<input type="radio"/>	<input type="radio"/>
15	<input type="radio"/>	<input type="radio"/>	<input type="radio"/>	<input type="radio"/>		35	<input type="radio"/>	<input type="radio"/>	<input type="radio"/>	<input type="radio"/>		55	<input type="radio"/>	<input type="radio"/>	<input type="radio"/>	<input type="radio"/>		75	<input type="radio"/>	<input type="radio"/>	<input type="radio"/>	<input type="radio"/>
16	<input type="radio"/>	<input type="radio"/>	<input type="radio"/>	<input type="radio"/>		36	<input type="radio"/>	<input type="radio"/>	<input type="radio"/>	<input type="radio"/>		56	<input type="radio"/>	<input type="radio"/>	<input type="radio"/>	<input type="radio"/>		76	<input type="radio"/>	<input type="radio"/>	<input type="radio"/>	<input type="radio"/>
17	<input type="radio"/>	<input type="radio"/>	<input type="radio"/>	<input type="radio"/>		37	<input type="radio"/>	<input type="radio"/>	<input type="radio"/>	<input type="radio"/>		57	<input type="radio"/>	<input type="radio"/>	<input type="radio"/>	<input type="radio"/>		77	<input type="radio"/>	<input type="radio"/>	<input type="radio"/>	<input type="radio"/>
18	<input type="radio"/>	<input type="radio"/>	<input type="radio"/>	<input type="radio"/>		38	<input type="radio"/>	<input type="radio"/>	<input type="radio"/>	<input type="radio"/>		58	<input type="radio"/>	<input type="radio"/>	<input type="radio"/>	<input type="radio"/>		78	<input type="radio"/>	<input type="radio"/>	<input type="radio"/>	<input type="radio"/>
19	<input type="radio"/>	<input type="radio"/>	<input type="radio"/>	<input type="radio"/>		39	<input type="radio"/>	<input type="radio"/>	<input type="radio"/>	<input type="radio"/>		59	<input type="radio"/>	<input type="radio"/>	<input type="radio"/>	<input type="radio"/>		79	<input type="radio"/>	<input type="radio"/>	<input type="radio"/>	<input type="radio"/>
20	<input type="radio"/>	<input type="radio"/>	<input type="radio"/>	<input type="radio"/>		40	<input type="radio"/>	<input type="radio"/>	<input type="radio"/>	<input type="radio"/>		60	<input type="radio"/>	<input type="radio"/>	<input type="radio"/>	<input type="radio"/>		80	<input type="radio"/>	<input type="radio"/>	<input type="radio"/>	<input type="radio"/>