

Model Test Paper 23
General Study Paper II

DO NOT OPEN THIS BOOKLET UNTIL YOU ARE TOLD TO DO SO

TEST BOOKLET
GENERAL STUDIES
Paper-II

C

Time Allowed : Two Hours

Maximum Marks : 200

INSTRUCTIONS

1. IMMEDIATELY AFTER THE COMMENCEMENT OF THE EXAMINATION YOU SHOULD CHECK THAT THE TEST BOOKLET *DOES NOT* HAVE ANY UNPRINTED OR TORN OR MISSING PAGES OR ITEMS, ETC, IF SO, GET IT REPLACED BY A COMPLETE TEST BOOKLET.
2. **Please note that it is the candidate's responsibility to encode and fill in the Roll Number and Test Booklet Series A, B, C or D carefully and without any omission or discrepancy at the appropriate place in the OMR Answer Sheet. Any omission/discrepancy will render the Answer Sheet liable for rejection.**
3. You have to enter your Roll Number on the Test Booklet in the Box provided alongside . *DO NOT* write *anything else* on the Test Booklet.
4. This Test Booklet contains **80** items (questions). Each item comprises four responses (answers). You will select the response which you want to mark on the Answer Sheet. In case you feel that there is more than one correct response, mark the response which you consider the best. In any case, choose *ONLY ONE* response for each item.
5. You have to mark all your responses *ONLY* on the separate Answer Sheet provided.
6. **All** items carry equal marks.
7. Before you proceed to mark in the Answer Sheet the response to various items in the Test Booklet, you have to fill in some particulars in the Answer Sheet as per instructions sent to you with your Admission Certificate.
8. After you have completed filling in all your responses on the Answer Sheet and the examination has concluded, you should hand over to the invigilator only the *Answer Sheet*. You are permitted to take away with you the Test Booklet.
9. Sheets for rough work are appended in the Test Booklet at the end.
10. **Penalty for wrong Answers :**
THERE WILL BE PENALTY FOR WRONG ANSWERS MARKED BY A CANDIDATE IN THE OBJECTIVE TYPE QUESTION PAPERS.
(i) There are four alternatives for the answer to every question. For each question for which a wrong answer has been given by the candidate, **one-third** of the marks assigned to that question will be deducted as penalty.
(ii) If a candidate gives more than one answer, it will be treated as a **wrong answer** even if one of the given answers happens to be correct and there will be same penalty as above to that question.
(iii) If a question is left blank, i.e., no answer is given by the candidate, there will be **no penalty** for that question.

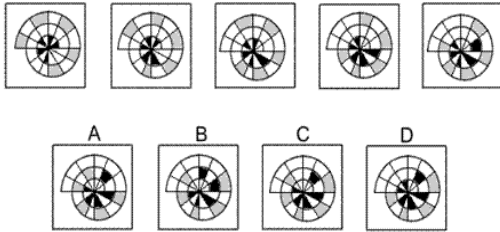
DO NOT OPEN THIS BOOKLET UNTIL YOU ARE TOLD TO DO SO

Model Test Paper 23
General Study Paper II

<p>1. Look at this series: 2, 4, 6, 8, 10, . . . What number should come next?</p> <p>(a) 11 (b) 12 (c) 13 (d) 14</p> <p>2. Look at this series: 58, 52, 46, 40, 34, . . . What number should come next?</p> <p>(a) 26 (b) 28 (c) 30 (d) 32</p> <p>3. Look at this series: 40, 40, 47, 47, 54, . . . What number should come next?</p> <p>(a) 40 (b) 44 (c) 54 (d) 61</p> <p>4. Look at this series: 544, 509, 474, 439, . . . What number should come next?</p> <p>(a) 404 (b) 414 (c) 420 (d) 445</p> <p>5. Look at this series: 201, 202, 204, 207, . . . What number should come next?</p> <p>(a) 205 (b) 208 (c) 210 (d) 211</p>	<p>6. Look at this series: 8, 22, 8, 28, 8, . . . What number should come next?</p> <p>(a) 9 (b) 29 (c) 32 (d) 34</p> <p>7. Look at this series: 80, 10, 70, 15, 60, . . . What number should come next?</p> <p>(a) 20 (b) 25 (c) 30 (d) 50</p> <p>8. Look at this series: 36, 34, 30, 28, 24, . . . What number should come next?</p> <p>(a) 20 (b) 22 (c) 23 (d) 26</p> <p>9. Look at this series: 22, 21, 23, 22, 24, 23, . . . What number should come next?</p> <p>(a) 22 (b) 24 (c) 25 (d) 26</p> <p>10. Look at this series: 3, 4, 7, 8, 11, 12, . . . What number should come next?</p> <p>(a) 7 (b) 10 (c) 14 (d) 15</p>
---	---

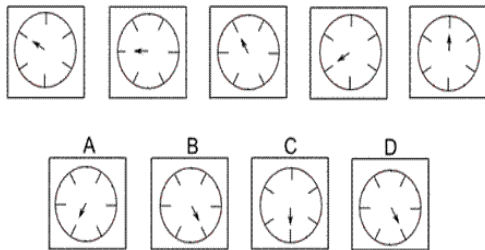
Model Test Paper 23
General Study Paper II

11.



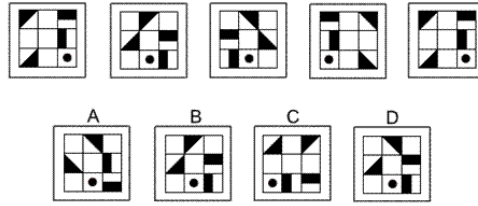
- (a) A
- (b) B
- (c) C
- (d) D

12.



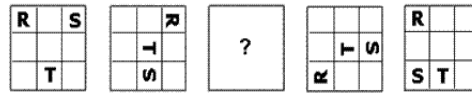
- (a) A
- (b) B
- (c) C
- (d) D

13.

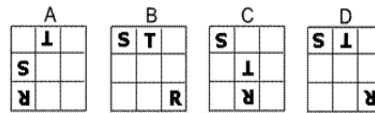


- (a) A
- (b) B
- (c) C
- (d) D

14.



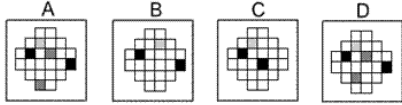
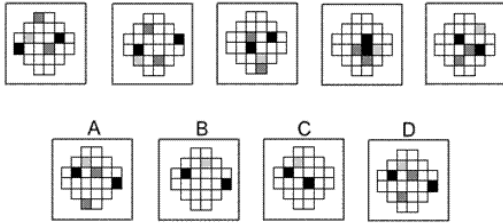
Which of the following replaces the question mark in the sequence?



- (a) A
- (b) B
- (c) C
- (d) D

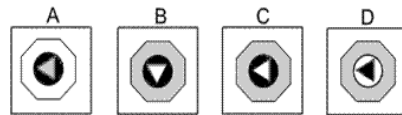
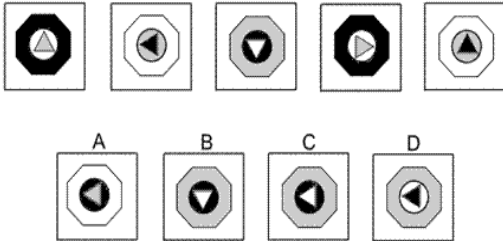
Model Test Paper 23
General Study Paper II

15.



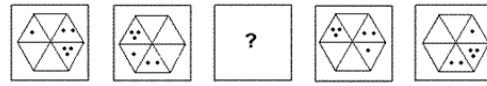
- (a) A
- (b) B
- (c) C
- (d) D

16.

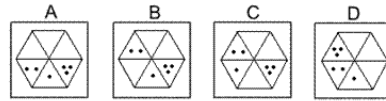


- (a) A
- (b) B
- (c) C
- (d) D

17.

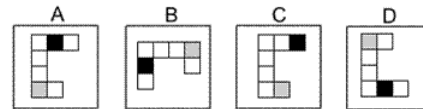
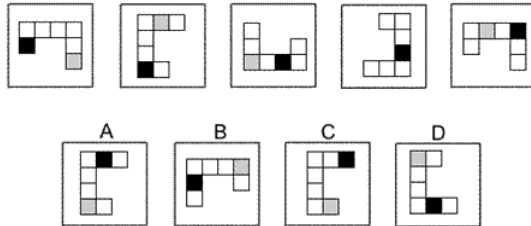


Which of the following replaces the question mark in the sequence?



- (a) A
- (b) B
- (c) C
- (d) D

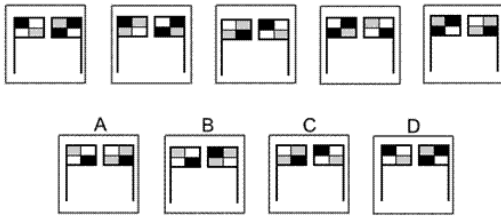
18.



- (a) A
- (b) B
- (c) C
- (d) D

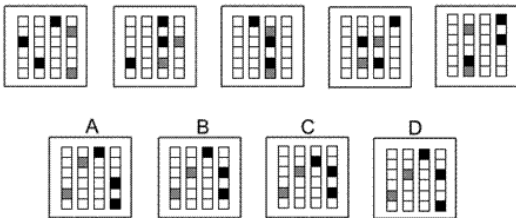
Model Test Paper 23
General Study Paper II

19.



- (a) A
- (b) B
- (c) C
- (d) D

20.



- (a) A
- (b) B
- (c) C
- (d) D

21. Ding's Diner advertised this daily lunch special: "Choose 1 item from each column—only \$4.95!" Thus, each daily lunch special consists of a salad, a soup, a sandwich, and a drink.

Salads	Soups	Sandwiches	Drinks
cole slaw lettuce potato	onion tomato	meat loaf chicken hamburger ham tenderloin	milk cola coffee tea

- (a) 4
- (b) 14
- (c) 30
- (d) 120

22. What is the slope of any line parallel to the line $9x + 4y = 7$?

- (a) -9
- (b) $-9/4$
- (c) $9/7$
- (d) 7

23. A DVD player with a list price of \$100 is marked down 30%. If John gets an employee discount of 20% off the sale price, how much does John pay for the DVD player ?


- (a) \$86.00
- (b) \$77.60
- (c) \$56.00
- (d) \$50.00

24.

$$\sqrt{-(-9)^2} = ? \text{ (Note: } i = \sqrt{-1} \text{)}$$

- (a) 9i
- (b) $9 + i$
- (c) $9 - i$
- (d) 9

Model Test Paper 23
General Study Paper II

<p>25. What is the degree measure of the acute angle formed by the hands of a 12-hour clock that reads exactly 1 o'clock?</p> <p>(a) 15°</p> <p>(b) 30°</p> <p>(c) 45°</p> <p>(d) 60°</p> <p>26. What is the probability that a number selected at random from the set $\{2, 3, 7, 12, 15, 22, 72, 108\}$ will be divisible by both 2 and 3 ?</p> <p>(a) $1/4$</p> <p>(b) $3/8$</p> <p>(c) $3/5$</p> <p>(d) $5/8$</p> <p>27. A circle has a circumference of 16π feet. What is the radius of the circle, in feet?</p> <p> (a) $\sqrt{8}$</p> <p>(b) 4</p> <p>(c) 8</p> <p>(d) 16</p> <p>28. A rectangle with a perimeter of 30 centimeters is twice as long as it is wide. What is the area of the rectangle in square centimeters?</p> <p>(a) 15</p> <p>(b) 30</p> <p>(c) 200</p> <p>(d) 3</p> <p>29. In the standard (x,y) coordinate plane, what are the coordinates of the midpoint of a line segment whose endpoints are $(-3,0)$ and $(7,4)$?</p> <p>(a) (2,2)</p> <p>(b) (2,4)</p>	<p>(c) (5,2)</p> <p>(d) (5,4)</p> <p>30. Points A, B, C, and D are on a line such that B is between A and C, and C is between B and D. The distance from A to B is 6 units. The distance from B to C is twice the distance from A to B, and the distance from C to D is twice the distance from B to C. What is the distance, in units, from the midpoint of BC to the midpoint of CD ?</p> <p>(a) 18</p> <p>(b) 14</p> <p>(c) 12</p> <p>(d) 9</p> <p>31. The area A of a trapezoid is given by the formula $A = 0.5(b + B)h$, where b and B are the sizes of the bases and h the size of the height of the trapezoid. Express B in terms of A, b and h.</p> <p>(a) $0.5Ah - b$</p> <p>(b) $2A/h - b$</p> <p>(c) $(2A - b)/h$</p> <p>(d) $2A/h + b$</p> <p>32. Tom, Linda and Alex have \$120 dollars. Alex has the third of what Tom has and Linda has twice as much as Alex. How much money, in dollars, does Linda have?</p> <p>(a) 10</p> <p>(b) 20</p> <p>(c) 40</p> <p>(d) 60</p> <p>33. Which of the following is equivalent to $6x^2 - 11x - 2$?</p> <p>(a) $(6x - 1)(x + 2)$</p> <p>(b) $(3x - 1)(2x + 2)$</p> <p>(c) $(3x + 1)(2x - 2)$</p> <p>(d) $(6x + 1)(x - 2)$</p>
--	--

Model Test Paper 23
General Study Paper II

34. During the same journey, Stuart drove x miles for 2 hours, and 200 miles for 3 hours. Find x if the average speed for the entire journey is 70 miles per hour.

- (a) 166
- (b) 167
- (c) 150
- (d) 140

35. Given the equations of the lines

- (I) $2y + 3x = 3$
- (II) $-3y - 2x = 5$
- (III) $-6y + 4x = 9$,
- (IV) $2y + 6x = 9$

which two lines are perpendicular?

- (a) (I) and (II)
- (b) (II) and (III)
- (c) (III) and (IV)
- (d) (I) and (III)

36. If the slope of a line is $\frac{1}{2}$ and the y -intercept is 3, what is the x -intercept of the same line?

- (a) 6
- (b) $\frac{3}{2}$
- (c) 0
- (d) -6

37. 6 people meet for a business lunch. Each person shakes hands once with each other person present. How many handshakes take place?

- (a) 30
- (b) 21
- (c) 18
- (d) 15

38. If $x^2 - y^2 = 55$, and $x - y = 11$, then $y =$

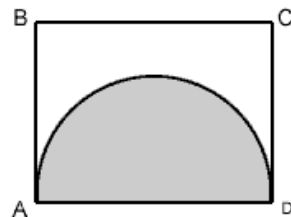
- (a) 8
- (b) 5

- (c) 3
- (d) -3

39. In a sports club with 30 members, 17 play badminton and 19 play tennis and 2 do not play either. How many members play both badminton and tennis?

- (a) 7
- (b) 8
- (c) 9
- (d) 10

40.



(figure not to scale)

Rectangle ABCD has a perimeter of 26. The half circle with diameter AD has an area of $8p$. What is the perimeter of the part of the figure that is not shaded?

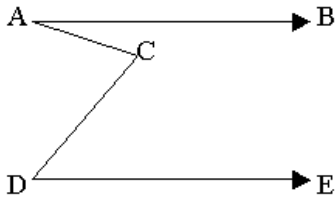
- (a) $26 + 4p$
- (b) $18 + 8p$
- (c) $18 + 4p$
- (d) $14 + 4p$

41. Courier charges for packages to a certain destination are 65 cents for the first 250 grams and 10 cents for each additional 100 grams or part thereof. What could be the weight in grams of a package for which the charge is \$1.55 ?

- (a) 1155
- (b) 1145
- (c) 1040
- (d) 950

Model Test Paper 23
General Study Paper II

42.



(figure not to scale)

- (a) 100
- (b) 90
- (c) 80
- (d) 70

43. If x/y is an integer, which of the following statements must be true?

- (a) both x and y are integers
- (b) x is an integer
- (c) either x or y is negative
- (d) $x = ny$ where n is an integer

44. The line with equation $y=7$ is graphed on the same xy -plane as the circle with center $(4,5)$ and radius 3. What are the x -coordinates of the points of intersection of the line and the circle?

- (a) -5 and 5
- (b) -1 and 1
- (c) 1.35 and 6.65
- (d) 1.76 and 6.24

45. The dimensions of a rectangular solid are 3 inches by 4 inches by inches. The length of each edge of the solid is to be increased by 20%. What is the surface area, in square inches, of the new solid?

- (a) 86.4
- (b) 94
- (c) 112.8
- (d) 135.4

46. If $a - b + c = 7$ and $a + b - c = 11$, which of the following statements MUST be true?

- I. a is positive
- II. $b > c$
- III. $bc < 0$

- (a) None
- (b) I only
- (c) II only
- (d) I and II only

47. If $a - b = 1$, $b - c = 2$, and $c - a = d$, what is the value of d ?

- (a) -3
- (b) -1
- (c) 1
- (d) 3

48. If $f(x) = x^2 + 2x$, what is $f(3) + f(-3)$?

- (a) 15
- (b) 16
- (c) 17
- (d) 18

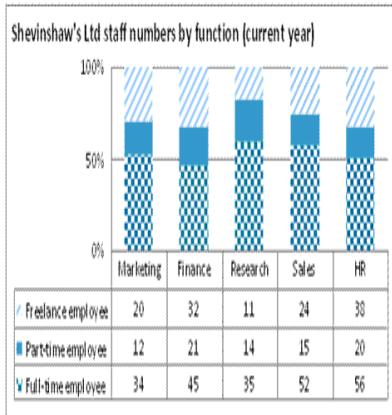
49. If $f(x) = x^2 + 2x$, what is $f(x+2)$?

- (a) $x^2 + 2x + 4$
- (b) $x^2 + 2x + 8$
- (c) $x^2 + 6x + 4$
- (d) $x^2 + 6x + 8$

50. If $f(x) = 3x + 3$, for what value of a is it true that $3f(a) = f(2a)$?

- (a) -3
- (b) -2
- (c) 0
- (d) 2

Model Test Paper 23
General Study Paper II



Shevinshaw's Ltd staff numbers by function		
	Previous Year	Projection for Next Year
Marketing	62	76
Finance	104	90
Research	74	72
Sales	82	94
HR	122	96

51. The HR Director at Shevinshaw's Ltd conducts a survey. An eighth of the full-time HR employees state that they would prefer to work part-time. If this occurred and other staff numbers remained the same, what would be the total number of part-time employees for this year?

- (a) 37
- (b) 89
- (c) 27
- (d) 56

52. Which function is forecast to lose the same number of employees as it lost last year?

- (a) None of these
- (b) Finance
- (c) Research
- (d) Sales

53. Which function has the lowest ratio of full-time employees compared to part-time employees and freelance employees combined?

- (a) Marketing
- (b) Finance
- (c) Research
- (d) HR

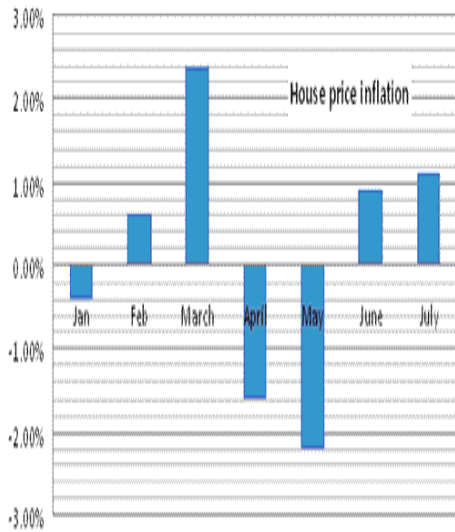
54. Which of the following statements is true?

- (a) Finance has the most employees
- (b) Total Sales employees outnumber total HR
- (c) Research has the most employees
- (d) HR has the most freelance employees

55. Weekend overtime is paid at a rate of double pay for Marketing and Research employees, with other employees receiving time and a half. Which function will work the second highest number of overtime hours – assuming that each employee works 8 days per year overtime – next year?

- (a) Research
- (b) Marketing
- (c) Finance
- (d) Sales

Model Test Paper 23
General Study Paper II



Property type	Average price (£) – end of June
Studio flat	£140,000
2-bedroom flat	£208,000
3-bedroom flat	£260,000
4-bedroom house	£365,000
5-bedroom house	£450,000

56. In which month shown did house prices change the most, and the least, respectively?

- (a) March, May
- (b) May, January
- (c) May, March
- (d) March, January

57. Which two property prices are in the ratio of 4:5?

- (a) 4-bedroom house: 3-bedroom flat

- (b) 2-bedroom flat: studio flat
- (c) Studio flat: 2-bedroom flat
- (d) 2-bedroom flat: 3-bedroom flat

58. At the end of June, a property speculator buys three 2-bedroom flats at the average price and rents each one out at £900 profit per month. If she sells the properties eighteen months later with house prices having risen 15% since purchase, how much profit, before costs, has she made?

- (a) £140,850
- (b) £165,600
- (c) £142,200
- (d) £48,600

59. If the cost of a 4-bedroom house continues at the same monthly rate of inflation as July, what will the cost be at the end of October?

- (a) £385,522
- (b) £381,300
- (c) £381,327
- (d) £381,237

60. If a newly decorated studio flat was worth £141,400 at the start of the year, what was its value at the end of February?

- (a) £141,679
- (b) £142,000
- (c) £140,834
- (d) £141,769

Model Test Paper 23
General Study Paper II

Sales (£millions)							
	US	US	Annual US	EU	EU	Annual EU	Worldwide
	(Jan-June)	(July-Dec)	Sales Target	(Jan-June)	(July-Dec)	Sales Target	Sales (Jan-Dec)
Product A	54.5	50.5	110	90.5	91.4	180	320
Product B	61.1	59.2	120	72.2	77.8	160	300
Product C	60.5	58	120	88	92.2	180	330
Product D	76.5	74.1	150	105.3	98.2	200	380
Product E	72.7	78.2	150	89.2	94.8	190	350

61. If worldwide sales comprise US sales, EU sales and Far Eastern sales, which products had the highest annual Far Eastern Sales?

- (a) Product A
- (b) Product B
- (c) Product C
- (d) Product D

62. For the 5 products combined, what was the absolute difference between the annual US and the annual EU sales against their respective targets?

- (a) £27.1 million (US); £25.8 million (EU)
- (b) £638.3 million (US); £908.2 million (EU)
- (c) £4.7 million (US); £10.4 million (EU)
- (d) £271.7 million (US); £258.2 million (EU)

63. If the annual EU sales for Products B and C comprise of online: offline sales in a ratio of 2:3 then what are the online sales for Products B and C?

- (a) £198,120,000
- (b) £19,812,000
- (c) £13,208,000
- (d) £132,080,000

64. US annual sales tax was 24% on the first £130 million of sales, 0% thereafter. EU annual sales tax was 22% on all sales. How much annual tax is due for Products B, C and D combined (to the nearest £million)?

- (a) £244 million
- (b) £211 million
- (c) £206 million
- (d) £243 million

65. Which of the following represents the smallest amount?

- (a) Product B's change in EU sales between Jan-June and July-Dec
- (b) 7% of Product D's US sales (Jan-June)
- (c) Product E's change in US sales between Jan-June and July-Dec
- (d) Average US Product A sales per month (July-Dec)

Model Test Paper 23
General Study Paper II

<p>The United States' space programme is at a critical juncture. Over the past four decades, spending on space has declined from 5% of the federal budget to 0.5%. The US government recently announced it has cancelled its Constellation human spaceflight programme, which was intended to provide transportation to the International Space Station (ISS). Instead, NASA will shift its emphasis to developing new technologies and commercializing space flight. NASA will outsource its transportation to the ISS – a move designed to dramatically reduce launch costs. Five private companies – nearly all of which are headed by internet entrepreneurs – are sharing \$50 million of federal funds to develop cargo spacecraft. NASA's new vision has not been met by enthusiasm from all quarters, with critics calling it the death knell of America's formerly glorious space programme. Politicians whose states are losing out on jobs as a result of NASA's cancelled programmes have been among the most vocal critics. With entrepreneurs racing to achieve human spaceflight, the next American to land on the moon could be a commercial passenger rather than a NASA astronaut.</p> <p>66. The Constellation programme has been axed in order for NASA to save money</p> <p>(a) True (b) False (c) Cannot say (d)</p> <p>67. Under NASA's new plans, travel to the International Space Station will be privatised</p> <p>(a) True (b) False (c) Cannot say (d)</p> <p>68. The five companies funded by NASA are using internet technology to develop commercial spacecraft</p> <p>(a) True (b) False (c) Cannot say (d)</p>	<p>69. Critics believe that NASA's new direction marks the end of American leadership in human space exploration</p> <p>(a) True (b) False (c) Cannot say (d)</p> <p>70. The United States government recently announced plans to further reduce its space programme budget</p> <p>(a) True (b) False (c) Cannot say (d)</p> <p>Although according to the EU-funded Psychonaut Research Project it has only been available since 2008, mephedrone is now the fourth most popular recreational drug in the United Kingdom. Also known as "meow meow" and "drone", mephedrone is a synthetic stimulant that is derived from cathinone compounds found in the khat plant of Eastern Africa. Chemically similar to amphetamines, mephedrone has the effect of euphoria and increased stimulation. Because it is sold as plant fertilizer and thus not subject to medical regulations, mephedrone is currently legal in the United Kingdom, although it has been banned in many other countries, including Sweden, Germany and Israel. Manufactured in China and sold cheaply, the drug's legality and availability have led to its meteoric rise. While it is not illegal, it does not follow that mephedrone is safe to use – a lack of scientific research means that its effects on health are not fully known. Following reports of addiction and the drug's suspected involvement in several deaths; there are calls in the UK to have mephedrone classified as an illegal substance immediately. This legal decision, however, cannot be taken until a government advisory council has fully investigated the scientific evidence</p> <p>71. Mephedrone is a naturally occurring substance intended for use as plant fertilizer</p> <p>(a) True (b) False (c) Cannot say</p>
--	--

Model Test Paper 23
General Study Paper II

<p>(d)</p> <p>72. Countries such as Sweden and Germany have scientifically proven the dangers of mephedrone</p> <p>(a) True</p> <p>(b) False</p> <p>(c) Cannot say</p> <p>(d)</p> <p>73. Mephedrone's low cost makes it especially attractive to teenage users</p> <p>(a) True</p> <p>(b) False</p> <p>(c) Cannot say</p> <p>(d)</p> <p>74. Despite being a legal substance, mephedrone is not safe to use</p> <p>(a) True</p> <p>(b) False</p> <p>(c) Cannot say</p> <p>(d)</p> <p>75. The British government has been criticised for failing to act quickly to criminalise mephedrone</p> <p>(a) True</p> <p>(b) False</p> <p>(c) Cannot say</p> <p>(d)</p> <p>Ecotourism can be defined as responsible travel to natural areas that aims to both conserve the environment and bring economic opportunities to local people. Ecotourism provides an alternative to environmentally damaging industries such as logging and mining, while also stimulating the local economy. However, its dependency on foreign investment leads to one of the main criticisms of the industry: that the profits generated from ecotourism do not benefit the local economy and work force. Furthermore, while the ideals behind</p>	<p>ecotourism are unobjectionable, the industry is highly susceptible to "greenwashing" – whereby a false impression of environmental friendliness is given. More radical opposition comes from those critics who believe that ecotourism is inherently flawed because travel that uses fossil fuels is damaging to the environment. Despite these voices of dissent, ecotourism has become the fastest-growing sector of the tourism industry, growing at an annual rate of twenty to thirty percent. Ironically, ecotourism's very success may counteract its environmental goals, as high levels of visitors – even careful ones – inevitably damage the ecosystem.</p> <p>76. Ecotourism strives to profit from a nation's natural resources</p> <p>(a) True</p> <p>(b) False</p> <p>(c) Cannot say</p> <p>(d)</p> <p>77. Ecotourism's critics object to the fact that air travel accelerates global warming</p> <p>(a) True</p> <p>(b) False</p> <p>(c) Cannot say</p> <p>(d)</p> <p>78. The passage dismisses the ecotourism industry as an example of greenwashing</p> <p>(a) True</p> <p>(b) False</p> <p>(c) Cannot say</p> <p>(d)</p> <p>79. The long-term sustainability of ecotourism is debatable</p> <p>(a) True</p> <p>(b) False</p> <p>(c) Cannot say</p> <p>(d)</p>
--	--

Model Test Paper 23
General Study Paper II

80. While ecotourism's environmental benefits are disputed, there is consensus that it benefits local people economically

- (a) True
- (b) False
- (c) Cannot say
- (d)

Answer Sheet

<p style="text-align: center;">A B C D</p> <p>1 ○ ○ ○ ○</p> <p>2 ○ ○ ○ ○</p> <p>3 ○ ○ ○ ○</p> <p>4 ○ ○ ○ ○</p> <p>5 ○ ○ ○ ○</p> <p>6 ○ ○ ○ ○</p> <p>7 ○ ○ ○ ○</p> <p>8 ○ ○ ○ ○</p> <p>9 ○ ○ ○ ○</p> <p>10 ○ ○ ○ ○</p> <p>11 ○ ○ ○ ○</p> <p>12 ○ ○ ○ ○</p> <p>13 ○ ○ ○ ○</p> <p>14 ○ ○ ○ ○</p> <p>15 ○ ○ ○ ○</p> <p>16 ○ ○ ○ ○</p> <p>17 ○ ○ ○ ○</p> <p>18 ○ ○ ○ ○</p> <p>19 ○ ○ ○ ○</p> <p>20 ○ ○ ○ ○</p>	<p style="text-align: center;">A B C D</p> <p>21 ○ ○ ○ ○</p> <p>22 ○ ○ ○ ○</p> <p>23 ○ ○ ○ ○</p> <p>24 ○ ○ ○ ○</p> <p>25 ○ ○ ○ ○</p> <p>26 ○ ○ ○ ○</p> <p>27 ○ ○ ○ ○</p> <p>28 ○ ○ ○ ○</p> <p>29 ○ ○ ○ ○</p> <p>30 ○ ○ ○ ○</p> <p>31 ○ ○ ○ ○</p> <p>32 ○ ○ ○ ○</p> <p>33 ○ ○ ○ ○</p> <p>34 ○ ○ ○ ○</p> <p>35 ○ ○ ○ ○</p> <p>36 ○ ○ ○ ○</p> <p>37 ○ ○ ○ ○</p> <p>38 ○ ○ ○ ○</p> <p>39 ○ ○ ○ ○</p> <p>40 ○ ○ ○ ○</p>	<p style="text-align: center;">A B C D</p> <p>41 ○ ○ ○ ○</p> <p>42 ○ ○ ○ ○</p> <p>43 ○ ○ ○ ○</p> <p>44 ○ ○ ○ ○</p> <p>45 ○ ○ ○ ○</p> <p>46 ○ ○ ○ ○</p> <p>47 ○ ○ ○ ○</p> <p>48 ○ ○ ○ ○</p> <p>49 ○ ○ ○ ○</p> <p>50 ○ ○ ○ ○</p> <p>51 ○ ○ ○ ○</p> <p>52 ○ ○ ○ ○</p> <p>53 ○ ○ ○ ○</p> <p>54 ○ ○ ○ ○</p> <p>55 ○ ○ ○ ○</p> <p>56 ○ ○ ○ ○</p> <p>57 ○ ○ ○ ○</p> <p>58 ○ ○ ○ ○</p> <p>59 ○ ○ ○ ○</p> <p>60 ○ ○ ○ ○</p>	<p style="text-align: center;">A B C D</p> <p>61 ○ ○ ○ ○</p> <p>62 ○ ○ ○ ○</p> <p>63 ○ ○ ○ ○</p> <p>64 ○ ○ ○ ○</p> <p>65 ○ ○ ○ ○</p> <p>66 ○ ○ ○ ○</p> <p>67 ○ ○ ○ ○</p> <p>68 ○ ○ ○ ○</p> <p>69 ○ ○ ○ ○</p> <p>70 ○ ○ ○ ○</p> <p>71 ○ ○ ○ ○</p> <p>72 ○ ○ ○ ○</p> <p>73 ○ ○ ○ ○</p> <p>74 ○ ○ ○ ○</p> <p>75 ○ ○ ○ ○</p> <p>76 ○ ○ ○ ○</p> <p>77 ○ ○ ○ ○</p> <p>78 ○ ○ ○ ○</p> <p>79 ○ ○ ○ ○</p> <p>80 ○ ○ ○ ○</p>
---	--	--	--