

Model Test Paper 25
General Study Paper II

DO NOT OPEN THIS BOOKLET UNTIL YOU ARE TOLD TO DO SO

TEST BOOKLET
GENERAL STUDIES
Paper-II

A

Time Allowed : Two Hours

Maximum Marks : 200

INSTRUCTIONS

1. IMMEDIATELY AFTER THE COMMENCEMENT OF THE EXAMINATION YOU SHOULD CHECK THAT THE TEST BOOKLET *DOES NOT* HAVE ANY UNPRINTED OR TORN OR MISSING PAGES OR ITEMS, ETC, IF SO, GET IT REPLACED BY A COMPLETE TEST BOOKLET.
2. **Please note that it is the candidate's responsibility to encode and fill in the Roll Number and Test Booklet Series A, B, C or D carefully and without any omission or discrepancy at the appropriate place in the OMR Answer Sheet. Any omission/discrepancy will render the Answer Sheet liable for rejection.**
3. You have to enter your Roll Number on the Test Booklet in the Box provided alongside . *DO NOT* write *anything else* on the Test Booklet.
4. This Test Booklet contains **80** items (questions). Each item comprises four responses (answers). You will select the response which you want to mark on the Answer Sheet. In case you feel that there is more than one correct response, mark the response which you consider the best. In any case, choose *ONLY ONE* response for each item.
5. You have to mark all your responses *ONLY* on the separate Answer Sheet provided.
6. **All** items carry equal marks.
7. Before you proceed to mark in the Answer Sheet the response to various items in the Test Booklet, you have to fill in some particulars in the Answer Sheet as per instructions sent to you with your Admission Certificate.
8. After you have completed filling in all your responses on the Answer Sheet and the examination has concluded, you should hand over to the invigilator only the *Answer Sheet*. You are permitted to take away with you the Test Booklet.
9. Sheets for rough work are appended in the Test Booklet at the end.
10. **Penalty for wrong Answers :**
THERE WILL BE PENALTY FOR WRONG ANSWERS MARKED BY A CANDIDATE IN THE OBJECTIVE TYPE QUESTION PAPERS.
(i) There are four alternatives for the answer to every question. For each question for which a wrong answer has been given by the candidate, **one-third** of the marks assigned to that question will be deducted as penalty.
(ii) If a candidate gives more than one answer, it will be treated as a **wrong answer** even if one of the given answers happens to be correct and there will be same penalty as above to that question.
(iii) If a question is left blank, i.e., no answer is given by the candidate, there will be **no penalty** for that question.

DO NOT OPEN THIS BOOKLET UNTIL YOU ARE TOLD TO DO SO

Model Test Paper 25
General Study Paper II

1. A car averages 27 miles per gallon. If gas costs \$4.04 per gallon, which of the following is closest to how much the gas would cost for this car to travel 2,727 typical miles?

- (a) \$ 44.44
- (b) \$109.08
- (c) \$118.80
- (d) \$408.04

2. When $x = 3$ and $y = 5$, by how much does the value of $3x^2 - 2y$ exceed the value of $2x^2 - 3y$?

- (a) 4
- (b) 14
- (c) 16
- (d) 20

3. What is the value of x when $2x + 3 = 3x - 4$?

- (a) -7
- (b) -1/5
- (c) 1
- (d) 7

4. What is the greatest common factor of 42, 126, and 210?

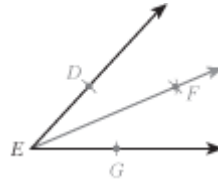
- (a) 2
- (b) 6
- (c) 14
- (d) 42

5. Sales for a business were 3 million dollars more the second year than the first, and sales for the third year were double the sales for the second year. If sales for the third year were 38 million dollars, what were sales, in millions of dollars, for the first year?

- (a) 16
- (b) 17.5
- (c) 20.5

(d) 22

6. In the figure below, ray EF was constructed starting from rays ED and EG . By using a compass, D and G were marked equidistant from E on rays ED and EG . The compass was then used to locate a point F , distinct from E , so that F is equidistant from D and G . For all constructions defined by the above steps, the measures of $\angle DEF$ and $\angle GEF$:



- (a) are equal
- (b) are NOT equal
- (c) sum to 30°
- (d) sum to 45°

7. Abandoned mines frequently fill with water. Before an abandoned mine can be reopened, the water must be pumped out. The size of pump required depends on the depth of the mine. If pumping out a mine that is D feet deep requires a pump that pumps a minimum of $D^2/25$

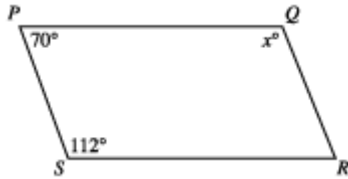
- (a) 362
- (b) 500
- (c) 800
- (d) 1,250

8. The length, in inches, of a box is 3 inches less than twice its width, in inches. Which of the following gives the length, l inches, in terms of the width, w inches, of the box?

- (a) $l = w + 3$
- (b) $l = w + 3$
- (c) $l = w - 3$
- (d) $l = 2w - 3$

Model Test Paper 25
General Study Paper II

9. In quadrilateral PQRS below, sides PS and QR are parallel for what value of x ?



- (a) 158
- (b) 132
- (c) 120
- (d) 110

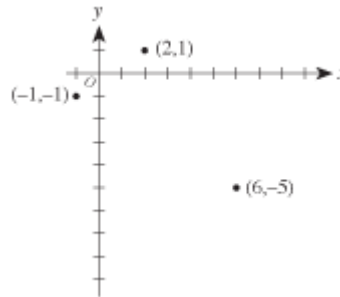
10. How many irrational numbers are there between 1 and 6 ?

- (a) 1
- (b) 3
- (c) 4
- (d) Infinitely many

11. A typical high school student consumes 67.5 pounds of sugar per year. As part of a new nutrition plan, each member of a track team plans to lower the sugar he or she consumes by at least 20% for the coming year. Assuming each track member had consumed sugar at the level of a typical high school student and will adhere to this plan for the coming year, what is the maximum number of pounds of sugar to be consumed by each track team member in the coming year?

- (a) 14
- (b) 44
- (c) 48
- (d) 54

12. In the standard (x, y) coordinate plane below, 3 of the vertices of a rectangle are shown. Which of the following is the 4th vertex of the rectangle?



- (a) $(3, -7)$
- (b) $(4, -8)$
- (c) $(5, -1)$
- (d) $(8, -3)$

13. The lead of a screw is the distance that the screw advances in a straight line when the screw is turned 1 complete turn. If a screw is $2\frac{1}{2}$ inches long and has a lead of $\frac{1}{8}$ inch, how many complete turns would get it all the way into a piece of wood?

- (a) 5
- (b) 10
- (c) 15
- (d) 20

14. If $xy = 144$, $x + y = 30$, and $x > y$, what is the value of $x - y$?

- (a) 4
- (b) 6
- (c) 18
- (d) 22

Model Test Paper 25
General Study Paper II

15. Which of the following is the sine of A in the right triangle below?

- (a) $5/13$
- (b) $5/12$
- (c) $12/13$
- (d) $12/5$

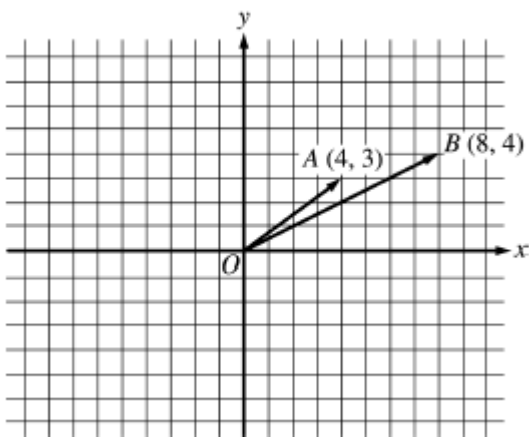
16. If $f(x) = 3x + 12/2x + 12$, what value does $f(x)$ approach as x gets infinitely larger?

- (a) -6
- (b) $-3/2$
- (c) -1
- (d) $3/2$

17. Alison deposits \$500 into a new savings account that earns 5 percent interest compounded annually. If Alison makes no additional deposits or withdrawals, how many years will it take for the amount in the account to double?

- (a) 14
- (b) 15
- (c) 19
- (d) 20

18.



In the figure above, when \vec{OB} is subtracted from \vec{OA} , what is the length of the resultant vector?

- (a) 3
- (b) 4.1
- (c) 5
- (d) 8.9

19. In the xy -plane, what is the area of a triangle whose vertices are $(\sqrt{2}, 0)$, $(2, \sqrt{10})$ and $(5, 0)$?

- (a) 3.59
- (b) 5.67
- (c) 7.91
- (d) 11.18

20. A right circular cylinder has radius 3 and height 3. If A and B are two points on its surface, what is the maximum possible straight-line distance between A and B?

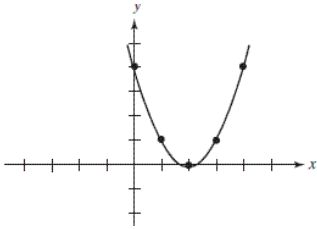
- (a) $3\sqrt{6}$
- (b) $3\sqrt{5}$
- (c) 6
- (d) $3\sqrt{3}$

21. Which of the following is NOT a point on the graph of $f(x) = x^2 + 4/x^2$?

- (a) (1, 5)
- (b) (-1, 5)
- (c) (2, 5)
- (d) (-2, -5)

Model Test Paper 25
General Study Paper II

22. Which of the following could be the equation of the graph shown in the figure below?



- (a) $y = -2x + 4$
- (b) $y = 2x + 4$
- (c) $y = x^2$
- (d) $y = x^2 - 4x + 4$

23. Which of the following numbers is NOT in the domain of?

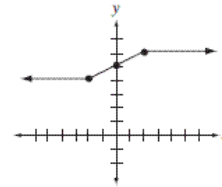
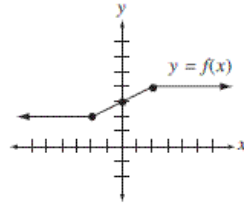
$$f(x) = \sqrt{4 - x}$$

- (a) -6
- (b) -4
- (c) 0
- (d) 6

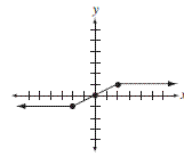
24. Which of the following is NOT in the range of $f(x) = x^2 - 3$?

- (a) 6
- (b) 1
- (c) 0
- (d) -6

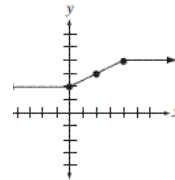
25. If the figure below is the graph of $y = f(x)$, which of the following is the graph of $y = f(x + 2)$?



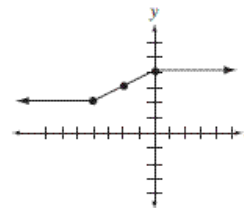
(a) (A)



(b) (B)



(c) (C)



(d) (D)

26. If A is the solution set of the equation $x^2 - 4 = 0$ and B is the solution set of the equation $x^2 - 3x + 2 = 0$, how many elements are in the union of the two sets?

- (a) 1
- (b) 2
- (c) 3
- (d) 4

Model Test Paper 25
General Study Paper II

<p>27. What is the value of $3 - -5$?</p> <p>(a) -8 (b) -2 (c) 0 (d) 2</p> <p>28. How many integers satisfy the inequality $x < p$?</p> <p>(a) 0 (b) 3 (c) 4 (d) 7</p> <p>29. What is the sum of the product and the quotient of 7 and 7?</p> <p>(a) 7 (b) 1 (c) 49 (d) 50</p> <p>30. If the product of 10 numbers is positive, what is the greatest number of them that could be negative?</p> <p>(a) 1 (b) 5 (c) 9 (d) 10</p> <p>Is free internet access as much a universal human right as access to clean water and healthcare? Many leading experts believe that the 80% of the world's population that is not connected to the web should have access to information through free low-bandwidth connection via mobile phones. The one fifth of the world connected to the internet, however, faces a very different problem: an insatiable appetite for bandwidth that outstrips availability. Bandwidth refers to the capacity to transfer data through a channel. Emails, for example, require less bandwidth than video. Information traffic jams result when too many</p>	<p>users try to move information at the same time, exceeding the channel's capacity. The popularity of mobile web devices means demand for wireless channels is growing rapidly, but bandwidth supply is limited – resulting in high charges for use. With bandwidth controlled by a handful of private suppliers, bandwidth is the subject of government debate in many countries, including the United States. Bandwidth suppliers are in favour of introducing tiered pricing structures, whereby customers paying higher rates would receive faster service. Critics believe that a tiered system violates the principle of net neutrality – whereby all data is treated as equal – and would allow suppliers to profiteer from controlling a scarce resource. Suppliers argue that they are funding huge infrastructure updates – such as switching from copper wires to expensive fiber optics – in order to improve services.</p> <p>31. The main argument in the passage is that internet users are not leaving enough bandwidth for 80% of the world's population</p> <p>(a) True (b) False (c) Cannot say (d)</p> <p>32. Access to information via the internet is a basic human right</p> <p>(a) True (b) False (c) Cannot say (d)</p> <p>33. The growth of mobile net device use has contributed towards the pressure on bandwidth availability</p> <p>(a) True (b) False (c) Cannot say (d)</p>
--	--

Model Test Paper 25
General Study Paper II

<p>34. Proposed tiered pricing structures would charge users more for using mobile web devices</p> <p>(a) True (b) False (c) Cannot say (d)</p> <p>35. Proponents of net neutrality are against the prioritising of certain web traffic</p> <p>(a) True (b) False (c) Cannot say (d)</p> <p>The Dead Sea Scrolls are probably the most significant archaeological discovery of the twentieth century. More than 800 ancient documents, written on papyrus and parchment, were found in 1947 in desert caves at Qumran, near the Dead Sea. The texts mainly date from between the last century BCE and the first century CE and are comprised of three types of document: copies of books from the Hebrew Bible; apocryphal manuscripts; and documents pertaining to the beliefs and practices of a sectarian community. The former category is arguably of the greatest academic significance, as documents such as a complete copy of the Book of Isaiah enabled historians to analyse the accuracy of Bible translations. However, the secrecy of the scholars appointed by the Israeli Antiquities Authority, and their slow rate of publication, were the subject of international controversy. In 1991, the Huntington Library made photographic images of the full set of scrolls finally available to all researchers. While the scrolls' importance is indisputable, there is no consensus over the texts' origins. The traditional view is that the scrolls belonged to an ascetic Jewish sect, widely believed to be the Essenes. The Essenes' rules and doctrines are even seen by some scholars as a precursor to Christianity. A competing theory holds that the documents are sacred texts belonging to various Jewish communities, hidden in the caves for safekeeping around 68C</p> <p>36. The traditional interpretation of the Dead Sea Scrolls is that they belonged to an early Christian sect called the Essenes</p> <p>(a) True</p>	<p>(b) False (c) Cannot say (d)</p> <p>37. Academics debate whether the scrolls are the detailed accounts of one particular sect, or provide historical information about the wider Jewish people</p> <p>(a) True (b) False (c) Cannot say (d)</p> <p>38. Not only the origins of the Dead Sea Scrolls, but also the process of their interpretation, have been disputed</p> <p>(a) True (b) False (c) Cannot say (d)</p> <p>39. Some scholars believe the Essenes inhabited the desert caves at Qumran, near the Dead Sea</p> <p>(a) True (b) False (c) Cannot say (d)</p> <p>40. The Dead Sea Scrolls include the oldest known copy of the Book of Is</p> <p>(a) True (b) False (c) Cannot say (d)</p>
--	--

Model Test Paper 25
General Study Paper II

<p>Have you ever set your mouth on fire by biting into a chilli pepper? The sensation is caused by capsaicin, a chemical compound that stimulates the mouth's pain receptors, which in turn tell the brain you've eaten something hot. The body reacts by perspiring and releasing endorphins, the "feel-good" effect of which perhaps accounts for spicy food's appeal. The first scale for measuring a chilli's heat was developed in 1912 by the chemist Wilbur Scoville. Scoville Heat Units refer to the number of times a chilli must be diluted before it is undetectable to tasters. The world's hottest chilli, the Indian naga jolokia, measures 970,000 SHU. Today a chilli's heat can be measured more accurately using high-pressure liquid chromatography, a technique that calculates the concentration of capsaicin in a solution. Humans have consumed chillies for over 8,000 years; they were first cultivated 6,000 years ago in South and Central America. In the late 15th century Christopher Columbus introduced chillies to the rest of the world via Spain, where they were called peppers because they were spicy like peppercorns. In addition to their culinary uses, chillies have long been prized for their medicinal properties. Scientific studies show that capsaicin may lower blood pressure and aid weight loss. Capsaicin has traditionally been used in tropical analgesics, however new research indicates that the compound may actually be carcinogenic.</p> <p>41. Although eaten around the world, chilli peppers are only indigenous to South and Central America</p> <p>(a) True (b) False (c) Cannot say (d)</p> <p>42. The scale developed by Wilbur Scoville is inherently subjective</p> <p>(a) True (b) False (c) Cannot say (d)</p> <p>43. The passage suggests that some people eat chilli peppers for their psychological effect as well as their spicy taste</p> <p>(a) True</p>	<p>(b) False (c) Cannot say (d)</p> <p>44. The chemical compound capsaicin sends a message to the brain that something hot has been consumed</p> <p>(a) True (b) False (c) Cannot say (d)</p> <p>45. Although first consumed 6,000 years ago, chilli peppers were only introduced to Europeans in the 15th century</p> <p>(a) True (b) False (c) Cannot say (d)</p> <p>Bioprospecting refers to searching the world's remotest areas for genetic resources with commercial value. Bioprospecting is hardly a new phenomenon – the active ingredient in aspirin, for example, comes from willow bark, whose medicinal properties were known to the ancient Greeks. In recent years, however, the ethics of the practice have been debated. Opponents, who use the term biopiracy, view it as the exploitation of developing countries' resources and indigenous medical knowledge for the developed world's profit. Pharmaceutical companies argue that drugs resulting from bioprospecting can help thousands of people. Furthermore, they are not patenting native plants, rather the techniques used to extract compounds from them. Despite these arguments, in 2005 the Indian government successfully overturned a US patent to extract an anti-fungal agent from the neem tree. Central to the debate is the question of who owns the world's biodiversity. The UN's Convention on Biological Diversity (CBD) was established in 1993 to ensure that bioprospectors obtain consent from and share any profits with the source nation. The United States, however, has not ratified the CBD. It is not only the pharmaceutical industry that has fallen foul of sovereign rights to biological resources. In 2008, Mexican farmers won an appeal to revoke a US patent on Mexican Enola</p>
--	--

**Model Test Paper 25
General Study Paper II**

beans. Similarly, following a diplomatic crisis between India and the United States, a Texan company lost the right to patent basmati rice.

46. India has successfully defended its ownership of genetic material and traditional knowledge

- (a) True
- (b) False
- (c) Cannot say
- (d)

47. Bioprospecting is primarily carried out by the pharmaceutical and food industries

- (a) True
- (b) False
- (c) Cannot say
- (d)

48. Under the CBD, nations grant access to sovereign genetic material in exchange for a share in the rewards

- (a) True
- (b) False
- (c) Cannot say
- (d)

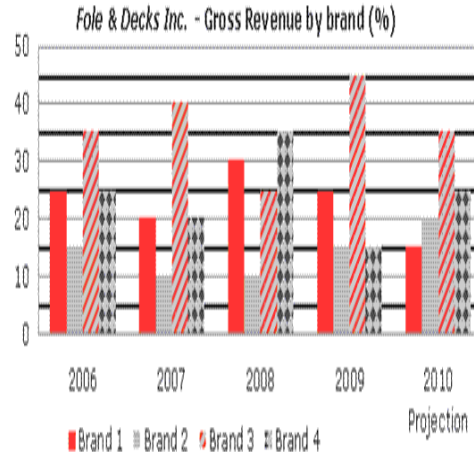
49. The United States government believes that the earth's biodiversity is not owned by sovereign nations

- (a) True
- (b) False
- (c) Cannot say
- (d)

50. Bioprospecting is defined as the practice of obtaining plants from developing countries for commercial exploitation

- (a) True
- (b) False

- (c) Cannot say
- (d)



	Total Gross Revenue* (£million)	Pre-Tax Profit (£million)	Earnings per share (pence)
2006	40	8.5	85
2007	42.7	8.7	104.7
2008	44.4	9	120
2009	50	9.6	120.3
2010	48.7	10.1	119.8

*Total Gross Revenue = Gross Revenue (Brand 1 + Brand 2 + Brand 3 + Brand 4)

51. What was Brand 2's gross revenue in 2008?

- (a) £10,000,000
- (b) £4,440,000
- (c) £44,400,000
- (d) £9,100,000

Model Test Paper 25
General Study Paper II

52. Which Brand's gross revenue has increased in value by the largest amount between 2006 and 2008?

- (a) Brand 1
- (b) Brand 2
- (c) Brand 3
- (d) Brand 4

53. If Earnings per share = Pre-tax profit / Number of shares issued, how many shares were issued in 2008 compared to 2006?

- (a) 2,500,000 less
- (b) 2,250,000 less
- (c) 25,000 more
- (d) 2,500,000 more

54. For the average annual pre-tax profit (for the years 2007-2009) to equal the average annual pre-tax profit (for the years 2007-2010), what must be the new 2010 Projection?

- (a) £895,000
- (b) £910,000
- (c) £1,150,000
- (d) £9,100,000

55. In which year was pre-tax profit less than 20% of total gross revenue?

- (a) 2007
- (b) 2008
- (c) None of these
- (d) 2009

	Average Earnings (Euros per head of the working population)	Male Population (millions)	Female Population (millions)	Working Population (% of total population)
Netherlands	34,000	8.9	9.1	55
Germany	29,000	39.8	40.2	50
France	30,000	31.1	31.4	48
Spain	25,000	24.2	23.8	45
UK	33,000	27.9	28.1	52

56. What are the total earnings for the working population in Spain?

- (a) 54 million Euros
- (b) 540 billion Euros
- (c) 540 million Euros
- (d) 54 billion Euros

Model Test Paper 25
General Study Paper II

57. If the annual birth rates for Germany and Spain are 5.4 births (per 500 population) and 6.4 births (per 500 population) respectively, what is the difference between the number of Spanish and German babies born each year?

- (a) 24,960 more Spanish babies
- (b) 100,000 more German babies
- (c) 249,600 more German babies
- (d) 1,233,000 more Spanish babies

58. Which of the following countries has a non-working population that is closest in number to the UK's non-working population?

- (a) Netherlands
- (b) Germany
- (c) France
- (d) Spain

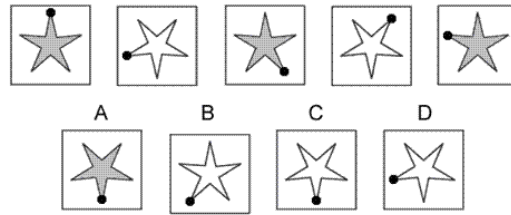
59. If the ratio of French unemployed in urban to rural areas is 7:8 and the French unemployment rate is 12% of the working population, how many French unemployed are there in urban areas?

- (a) 1,050,000
- (b) 1,332,000
- (c) 1,680,000
- (d) 2,500,000

60. If the ratio of France:Belgium average earnings per head of working population is 2:5, then what is Belgium's average earnings in £, at an exchange rate of 1.15 Euros to the £ (to the nearest £100)?

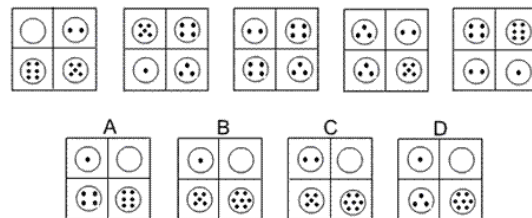
- (a) £124,000
- (b) £86,000
- (c) £86,300
- (d) £65,200

61.



- (a) A
- (b) B
- (c) C
- (d) D

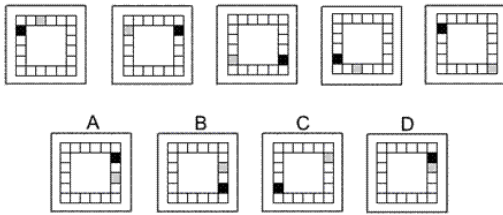
62.



- (a) A
- (b) B
- (c) C
- (d) D

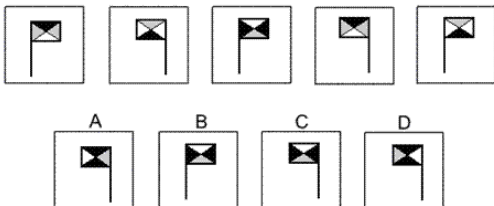
Model Test Paper 25
General Study Paper II

63.



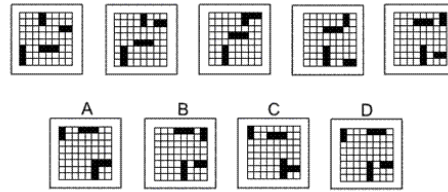
- (a) A
- (b) B
- (c) C
- (d) D

64.



- (a) A
- (b) B
- (c)
- (d) D

65.



- (a) A
- (b) B
- (c) C
- (d) D

66. METAPHOR : SYMBOL

- (a) pentameter : poem
- (b) rhythm : melody
- (c) nuance : song
- (d) analogy : comparison

67. PASTORAL : RURAL

- (a) metropolitan : urban
- (b) harvest : autumn
- (c) agrarian : benevolent
- (d) sleepy : nocturnal

68. One New York publisher has estimated that 50,000 to 60,000 people in the United States want an anthology that includes the complete works of William Shakespeare. And what accounts for this renewed interest in Shakespeare? As scholars point out, his psychological insights into both male and female characters are amazing even today.

This paragraph best supports the statement that

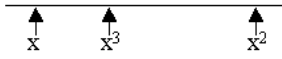
- (a) Shakespeare's characters are more interesting than fictional characters today

Model Test Paper 25
General Study Paper II

<p>(b) people today are interested in Shakespeare's work because of the characters</p> <p>(c) academic scholars are putting together an anthology of Shakespeare's work</p> <p>(d) New Yorkers have a renewed interested in the work of Shakespeare</p> <p>69. The image of a knitter as an older woman sitting in a comfortable, old-fashioned living room with a basket of yarn at her feet and a bun in her hair is one of the past. As knitting continues to become more popular and increasingly trendy, it is much more difficult to describe the average knitter. Knitters today might be 18, 28, 40, or 65. They might live in a big urban center and take classes in a knitting shop that doubles as a café or they may gather in suburban coffee shops to support one another in knitting and other aspects of life. They could be college roommates knitting in their dorm room or two senior citizens knitting in a church hall. Even men are getting in the act. It would be incredibly difficult to come up with an accurate profile of a contemporary knitter to replace that image of the old woman with the basket of yarn!</p> <p>This paragraph best supports the statement that</p> <p>(a) people are returning to knitting in an attempt to reconnect with simpler times</p> <p>(b) knitting is now more of a group activity, as opposed to an individual hobby</p> <p>(c) creating an accurate profile of a particular type of person depends on the people in this group having traits and characteristics in common</p> <p>(d) today's knitters are much less accomplished than knitters of the past</p> <p>A typical logical reasoning question presents an argument and asks you to analyze it. You may be asked to draw further conclusions from the argument, determine what strengthens or weakens the argument, find flaws in the argument, or justify the argument. Success with these types of questions depends on your being able to understand the structure of the argument. Remember that every argument has a point of view. Every argument draws a conclusion and is generally supported with evidence. Study each passage to determine how each sentence contributes to the argument the speaker is trying to make. Then make sure you understand the question that is being asked before you choose from the five answer options.</p>	<p>Answer questions 70 and 71 on the basis of the information below.</p> <p>According to last week's newspaper, doctors in large cities make more money than doctors in small towns or rural areas. It does not seem fair that just because a doctor's office is in a fancy building or at a fancy address, he or she can charge the patients more. Of course, some medical schools cost more than others, but basically all doctors spend a lot of money and a long time in school. There's no proof that graduates of the more expensive schools practice in big cities and graduates of the less expensive schools practice in small towns. All doctors should charge the same. Whether a patient goes to a doctor in a big city or small town, the cost should be the same.</p> <p>70. A person seeking to refute the argument might argue that</p> <p>(a) all doctors charge too much money and should lower their fees</p> <p>(b) medical practices are more expensive to maintain in large cities than in small towns and rural areas</p> <p>(c) doctors who owe student loans should charge more than other doctors</p> <p>(d) medical care from small-town doctors is better than medical care from large-city doctors</p> <p>71. A major flaw in the argument is that the speaker assumes that</p> <p>(a) all doctors are specialists</p> <p>(b) all patients carry health insurance</p> <p>(c) all doctors have huge student loans</p> <p>(d) all doctors see the same number of patients</p> <p>72. What is the greatest of 3 consecutive integers whose sum is 24 ?</p> <p>(a) 6</p> <p>(b) 7</p> <p>(c) 8</p> <p>(d) 9</p>
--	--

Model Test Paper 25
General Study Paper II

73.



Considering the positions on the number line above, which of the following could be a value for x ?

- (a) $5/3$
- (b) $3/5$
- (c) $-2/5$
- (d) $-5/2$

74. A piece of ribbon 4 yards long is used to make bows requiring 15 inches of ribbon for each. What is the maximum number of bows that can be made?

- (a) 8
- (b) 9
- (c) 10
- (d) 11

75. How many numbers between 200 and 400 begin or end with 3 ?

- (a) 20
- (b) 60
- (c) 100
- (d) 110

Huge controversy surrounded the construction between 1994 and 2006 of what was the world's largest hydroelectric dam, the Three Gorges Dam. Spanning China's 1.4-mile wide Yangtze River in the Hubei province with twenty-six state-of-the-art turbines, the dam has been heralded by the Chinese state as a symbol of China's modernisation and engineering prowess. It supports China's economic development by supplying over ten percent of its electricity.

However, over 1.3 million people were deliberately displaced as part of the Gorges flooding project that created the dam's 660km-long reservoir. Hundreds of archaeological sites, initially above and below ground level, were lost under the reservoir's water. Questions remain as to whether the dam – as a source of renewable energy – benefits the surrounding environment, or depletes it by causing, for example, landslides and the death of fish species in the Yangtze. Supporters argue that the Dam's deepening of the river has made the Yangtze easier for large ships to navigate and has reduced the risk of flooding downstream. As the only other viable Chinese energy source continues to be non-renewable coal power, the hydroelectric power generated by the dam may be the lesser of two evils.

76. The passage suggests that energy supplies are critical to economic development

- (a) True
- (b) False
- (c) Cannot say
- (d)

77. The Three Gorges Dam is China's largest and most controversial dam

- (a) True
- (b) False
- (c) Cannot say
- (d)

78. The environmental impacts of the Three Gorges Dam have been more positive than negative

- (a) True
- (b) False
- (c) Cannot say
- (d)

79. The 660km length of the Three Gorges Dam spans the Yangtze River

- (a) True
- (b) False

Model Test Paper 25
General Study Paper II

<p>(c) Cannot say (d) 80. The Dam's monetary benefits were prioritised over any social and environmental costs (a) True (b) False (c) Cannot say (d)</p>	
---	--

Model Test Paper 25
General Study Paper II

Answer Sheet

	A	B	C	D		A	B	C	D		A	B	C	D		A	B	C	D
1	<input type="radio"/>	<input type="radio"/>	<input type="radio"/>	<input type="radio"/>	21	<input type="radio"/>	<input type="radio"/>	<input type="radio"/>	<input type="radio"/>	41	<input type="radio"/>	<input type="radio"/>	<input type="radio"/>	<input type="radio"/>	61	<input type="radio"/>	<input type="radio"/>	<input type="radio"/>	<input type="radio"/>
2	<input type="radio"/>	<input type="radio"/>	<input type="radio"/>	<input type="radio"/>	22	<input type="radio"/>	<input type="radio"/>	<input type="radio"/>	<input type="radio"/>	42	<input type="radio"/>	<input type="radio"/>	<input type="radio"/>	<input type="radio"/>	62	<input type="radio"/>	<input type="radio"/>	<input type="radio"/>	<input type="radio"/>
3	<input type="radio"/>	<input type="radio"/>	<input type="radio"/>	<input type="radio"/>	23	<input type="radio"/>	<input type="radio"/>	<input type="radio"/>	<input type="radio"/>	43	<input type="radio"/>	<input type="radio"/>	<input type="radio"/>	<input type="radio"/>	63	<input type="radio"/>	<input type="radio"/>	<input type="radio"/>	<input type="radio"/>
4	<input type="radio"/>	<input type="radio"/>	<input type="radio"/>	<input type="radio"/>	24	<input type="radio"/>	<input type="radio"/>	<input type="radio"/>	<input type="radio"/>	44	<input type="radio"/>	<input type="radio"/>	<input type="radio"/>	<input type="radio"/>	64	<input type="radio"/>	<input type="radio"/>	<input type="radio"/>	<input type="radio"/>
5	<input type="radio"/>	<input type="radio"/>	<input type="radio"/>	<input type="radio"/>	25	<input type="radio"/>	<input type="radio"/>	<input type="radio"/>	<input type="radio"/>	45	<input type="radio"/>	<input type="radio"/>	<input type="radio"/>	<input type="radio"/>	65	<input type="radio"/>	<input type="radio"/>	<input type="radio"/>	<input type="radio"/>
6	<input type="radio"/>	<input type="radio"/>	<input type="radio"/>	<input type="radio"/>	26	<input type="radio"/>	<input type="radio"/>	<input type="radio"/>	<input type="radio"/>	46	<input type="radio"/>	<input type="radio"/>	<input type="radio"/>	<input type="radio"/>	66	<input type="radio"/>	<input type="radio"/>	<input type="radio"/>	<input type="radio"/>
7	<input type="radio"/>	<input type="radio"/>	<input type="radio"/>	<input type="radio"/>	27	<input type="radio"/>	<input type="radio"/>	<input type="radio"/>	<input type="radio"/>	47	<input type="radio"/>	<input type="radio"/>	<input type="radio"/>	<input type="radio"/>	67	<input type="radio"/>	<input type="radio"/>	<input type="radio"/>	<input type="radio"/>
8	<input type="radio"/>	<input type="radio"/>	<input type="radio"/>	<input type="radio"/>	28	<input type="radio"/>	<input type="radio"/>	<input type="radio"/>	<input type="radio"/>	48	<input type="radio"/>	<input type="radio"/>	<input type="radio"/>	<input type="radio"/>	68	<input type="radio"/>	<input type="radio"/>	<input type="radio"/>	<input type="radio"/>
9	<input type="radio"/>	<input type="radio"/>	<input type="radio"/>	<input type="radio"/>	29	<input type="radio"/>	<input type="radio"/>	<input type="radio"/>	<input type="radio"/>	49	<input type="radio"/>	<input type="radio"/>	<input type="radio"/>	<input type="radio"/>	69	<input type="radio"/>	<input type="radio"/>	<input type="radio"/>	<input type="radio"/>
10	<input type="radio"/>	<input type="radio"/>	<input type="radio"/>	<input type="radio"/>	30	<input type="radio"/>	<input type="radio"/>	<input type="radio"/>	<input type="radio"/>	50	<input type="radio"/>	<input type="radio"/>	<input type="radio"/>	<input type="radio"/>	70	<input type="radio"/>	<input type="radio"/>	<input type="radio"/>	<input type="radio"/>
11	<input type="radio"/>	<input type="radio"/>	<input type="radio"/>	<input type="radio"/>	31	<input type="radio"/>	<input type="radio"/>	<input type="radio"/>	<input type="radio"/>	51	<input type="radio"/>	<input type="radio"/>	<input type="radio"/>	<input type="radio"/>	71	<input type="radio"/>	<input type="radio"/>	<input type="radio"/>	<input type="radio"/>
12	<input type="radio"/>	<input type="radio"/>	<input type="radio"/>	<input type="radio"/>	32	<input type="radio"/>	<input type="radio"/>	<input type="radio"/>	<input type="radio"/>	52	<input type="radio"/>	<input type="radio"/>	<input type="radio"/>	<input type="radio"/>	72	<input type="radio"/>	<input type="radio"/>	<input type="radio"/>	<input type="radio"/>
13	<input type="radio"/>	<input type="radio"/>	<input type="radio"/>	<input type="radio"/>	33	<input type="radio"/>	<input type="radio"/>	<input type="radio"/>	<input type="radio"/>	53	<input type="radio"/>	<input type="radio"/>	<input type="radio"/>	<input type="radio"/>	73	<input type="radio"/>	<input type="radio"/>	<input type="radio"/>	<input type="radio"/>
14	<input type="radio"/>	<input type="radio"/>	<input type="radio"/>	<input type="radio"/>	34	<input type="radio"/>	<input type="radio"/>	<input type="radio"/>	<input type="radio"/>	54	<input type="radio"/>	<input type="radio"/>	<input type="radio"/>	<input type="radio"/>	74	<input type="radio"/>	<input type="radio"/>	<input type="radio"/>	<input type="radio"/>
15	<input type="radio"/>	<input type="radio"/>	<input type="radio"/>	<input type="radio"/>	35	<input type="radio"/>	<input type="radio"/>	<input type="radio"/>	<input type="radio"/>	55	<input type="radio"/>	<input type="radio"/>	<input type="radio"/>	<input type="radio"/>	75	<input type="radio"/>	<input type="radio"/>	<input type="radio"/>	<input type="radio"/>
16	<input type="radio"/>	<input type="radio"/>	<input type="radio"/>	<input type="radio"/>	36	<input type="radio"/>	<input type="radio"/>	<input type="radio"/>	<input type="radio"/>	56	<input type="radio"/>	<input type="radio"/>	<input type="radio"/>	<input type="radio"/>	76	<input type="radio"/>	<input type="radio"/>	<input type="radio"/>	<input type="radio"/>
17	<input type="radio"/>	<input type="radio"/>	<input type="radio"/>	<input type="radio"/>	37	<input type="radio"/>	<input type="radio"/>	<input type="radio"/>	<input type="radio"/>	57	<input type="radio"/>	<input type="radio"/>	<input type="radio"/>	<input type="radio"/>	77	<input type="radio"/>	<input type="radio"/>	<input type="radio"/>	<input type="radio"/>
18	<input type="radio"/>	<input type="radio"/>	<input type="radio"/>	<input type="radio"/>	38	<input type="radio"/>	<input type="radio"/>	<input type="radio"/>	<input type="radio"/>	58	<input type="radio"/>	<input type="radio"/>	<input type="radio"/>	<input type="radio"/>	78	<input type="radio"/>	<input type="radio"/>	<input type="radio"/>	<input type="radio"/>
19	<input type="radio"/>	<input type="radio"/>	<input type="radio"/>	<input type="radio"/>	39	<input type="radio"/>	<input type="radio"/>	<input type="radio"/>	<input type="radio"/>	59	<input type="radio"/>	<input type="radio"/>	<input type="radio"/>	<input type="radio"/>	79	<input type="radio"/>	<input type="radio"/>	<input type="radio"/>	<input type="radio"/>
20	<input type="radio"/>	<input type="radio"/>	<input type="radio"/>	<input type="radio"/>	40	<input type="radio"/>	<input type="radio"/>	<input type="radio"/>	<input type="radio"/>	60	<input type="radio"/>	<input type="radio"/>	<input type="radio"/>	<input type="radio"/>	80	<input type="radio"/>	<input type="radio"/>	<input type="radio"/>	<input type="radio"/>